

# Summertime in the Belgrades



... Serving the Central Maine Lakes & Kennebec River Corridor

VOLUME 26, NUMBER 1

## Summer of 2024: As Good As It Gets

by Esther J. Perne



View from Long Pond of Belgrade Lakes Village and across Great Pond.

**A**s good as it gets is the sun breaking through a bank of clouds...bright stars on a dark night...a bug-scattering breeze...maybe a rainbow

As good as it gets is when a line of cars brakes for ducklings crossing the road...when a country field is a blanket of rippling green and there's a deer in the middle of it...when daylight generous-

ly adds activity time to the summer schedule...

So many small touches to the summer season are as good as it gets, making people feel good about themselves, good about getting out and around, good about living the nature-oriented life, about being near the lakes, the hillsides, the backroads and the trails or about following the sound of music to an outdoor concert, the chatter

of children to a playground, the beat of a marching band to a parade.

As good as it gets is the laughter among old summer friends meeting after a winter away, the greetings offered from craft to craft magnified by open water, the polite eye contact among strangers passing on a small-town sidewalk, the

*Continued on page 2*

**Mid-Maine Marine Inc.**  
 885 Kennedy Memorial Drive, Oakland, ME 04963  
 1/2 Mile West of Exit 127 off I-95 • 1-800-649-2628  
[www.midmainmarine.com](http://www.midmainmarine.com)

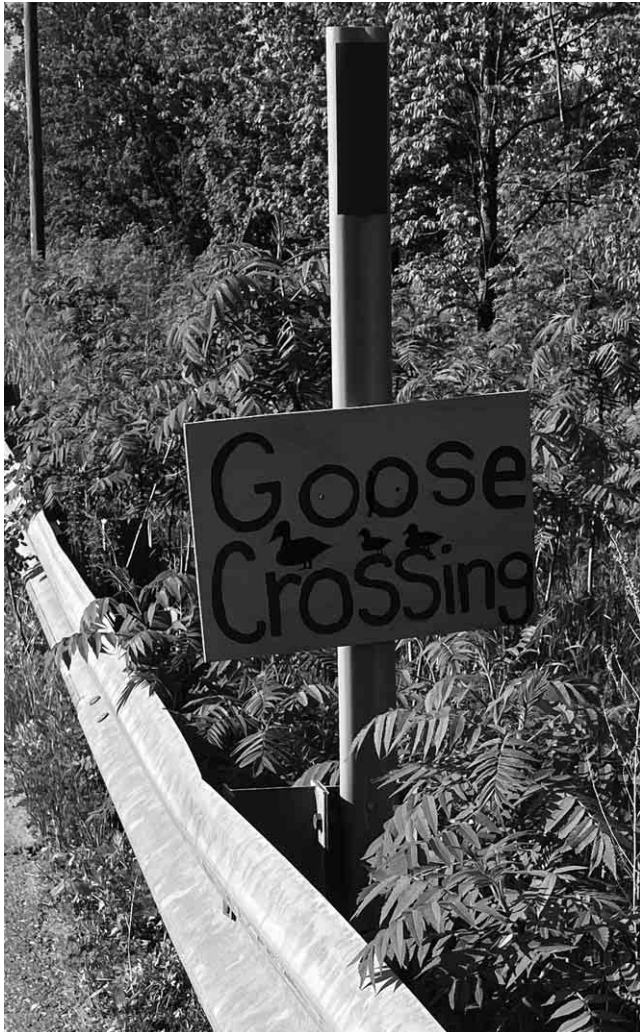
**HARRIS**  
 POWERED BY MERCURY

**CATCH YOUR NEXT ADVENTURE**

**Join us...and help protect our lakes!**  
 Please support our Loon Preservation Project.

**Belgrade Lakes Association**  
 137 Main Street, Belgrade Lakes, Maine 04918  
 207-512-5150 • [www.belgradelakesassociation.org](http://www.belgradelakesassociation.org)

**MIFF**  
**27<sup>TH</sup> MAINE INTERNATIONAL FILM FESTIVAL**  
 July 12-21, 2024  
 Tickets and Passes available  
[MIFF.ORG](http://MIFF.ORG)



long conversations at the post office or under a community signpost and the eavesdropping that leads to delightfully overheard discoveries on places to visit, activities to pursue, ways to while away a summer's day.

As good as it gets is the influx of summer guests, tourists, vacationers and relatives and the

lessons in appreciation of the area they bring with them.

As good as it gets are the small, simple graspable worlds summer allows us to create - worlds defined by a watercraft, a shoreline, a footpath, a golf course, ball field, a garden or a yard.

As good as it gets is no fuel bills, low utility usage, no shoveling and plowing, no slipping and sliding. Bare feet on soft ground, woodpiles that can wait and buying local at a roadside stand or cooler where the money box is on your honor are all as good as it gets.

As good as it gets is finally daring to drive on an unknown country road or to follow an unfamiliar trail, to pass community ball parks ringed by proud parents, to be welcomed by the smell of a building left closed for the winter...

Is there better than good? Sure. There are days so clear that the distant muted mountains absolutely pop out from the horizon, so quiet the song of a single bird carries its message across fields and through trees, so peaceful that all hopes seem possible.

But for everyone who lives for summer in central Maine, who longs to be here, who travels to get here and who has hard-earned time to spend and spends it here every single, simple, small-time, unpredictable but still wonderful day is as good as it gets.

Here's to enjoying another good summer.

*Continued from page 5...*

back in the shallows, chasing spawning sunfish. Fast action can be had with streamer flies, surface poppers, jerk baits, or Senko type jigs. In mid-May, my youngest grandson, "Bub," visited and we went fishing. He caught a couple of nice rainbow trout. You can tell by the smile on his face, he had a great time and I enjoyed watching him catch the fish much more than catching them myself.

A couple of weeks ago, I was out on French Mountain with the 7 Lakes Stewardship Committee getting the trails cleaned up for the upcoming season. I was happy to see several families out on the trails with their kids, including the Tremblay Family from Waterville, who said they had been hiking that trail since the parents were kids themselves. Three generations of the combined VanDeusen-Holland Family, from Farmingdale and Gardner were out celebrating Mother's Day hiking with their kids and grandkids. Check the 7LA Website (<https://www.7lakesalliance.org/>) and FaceBook site for upcoming events. Upcoming programs include a Birding walk (June 21) and our Tuesday afternoon Chewonki presentations begin on June 25th (Vernal Pools). I encourage everyone to take advantage of the wealth of recreational opportunities this area offers. Do like they used to in "the good old days" and take a kid fishing, or on a hike, or paddling in a canoe. It's how memories are made. Or take a parent, so they can become a kid again.



Messalonskee Class of 2026 Presents

2ND ANNUAL

# NEST AT NATANIS GOLF TOURNAMENT

28 June 2024 || 9:00 am Shotgun Start

Natanis Golf Course

Prizes for 1st, 2nd, 3rd place  
Silent Auction and fun competitions



To register, visit:  
[app.eventcaddy.com/events/nest-at-natanis-golf-tournament](http://app.eventcaddy.com/events/nest-at-natanis-golf-tournament)  
Email [rsucy@rsu18.org](mailto:rsucy@rsu18.org) with any questions



## Home insurance, made to measure.

Belgrade Lakes Region families trust us for a personal approach bringing peace of mind. Our experienced professionals create customized insurance plans designed around your needs, not what's worked for someone else.

Call today to find out how we can help you protect your home & auto, boat, RV and more. Insurance for your business, too, as well as health & life insurance, including Medicare.

**Allen** 

51 Main Street, Waterville, Maine 04901  
800-244-9046 | [AllenIF.com/Waterville](http://AllenIF.com/Waterville)

Insurance | Financial  
100% EMPLOYEE-OWNED



## Table of Contents

## Welcome Letter

Summer in Central Maine: As Good As It Gets..... 1-2

Table of Contents: A New Season Starts..... 3

It's Time To Reach For Summertime..... 3

Belgrades Lakes Region History: The Belgrade by Rod Johnson..... 4

Belgrade Historical Society: Memories of The Belgrade..... 4

Business Profile: Belgrade's Winterberry Farm..... 4

Belgrades 7 Lakes Alliance Welcomes New CEO..... 4

Take It Outside with Pete Kallin..... 5

Calendar of Events, Activities, Outings and More..... 6

On The Kennebec River: Great Car Race to End in Gardiner ..... 6

Kennebec Corridor Map..... 7

Weekly: Concerts, Farmers' Markets, Summer Programs..... 7

Map of the Belgrades Region: Lakes, Land, Towns, Trails..... 8-9

Town by Town Directory of Visits and Sights..... 10

Notebook: Noteworthy and Newsworthy..... 11

Business Directory: A Great Guide to Area Goods and Services..... 12-13

The Call of the Loon..... 13

Martha Barkley Reviews "Maine Lakes" by Sarah Stiles Bright with photos by Christopher Barnes..... 14

Real Estate Update: Welcome Home..... 15

The Dams Keeper Report: Summer Levels..... 15

Dear Readers:

It's that time again, time to reach for ice cream cones, hot dogs, s'mores, a summer activities program and Summertime in the Belgrades.

It's that time when the days are long and the opportunities to be active, to attend events and to be outside are even longer, when the whole region is an invitation to break the indoor routine and enjoy small-time, small-town Maine at its best - and to appreciate other people's enjoyment of that lifestyle, too.

It's that time when family time is so important and possible, when children and pets and picnic baskets and playgrounds and parks top the daily outings options and when time spent near nature is enriching for all generations.

It's the time when memories are collected that will return comfortingly at unrelated moments in far different places: memories of walking through a gentle rain, of struggling against a strong wind, of joining strangers of all descriptions with the decided goal of choosing the best concoction or flavor of ice cream that a summer stand can possibly supply, or reclining under the stars to watch fireworks or listening to an outdoor concert.

Any time it's time to thank our advertisers, but especially at the start of the season. Summertime in the Belgrades advertisers are the best cross section of central Maine businesses for which a newspaper reader could wish. Some of them have supported the publication for over 3 decades; some are new in 2024. All of them are hardworking and helpful and undoubtedly understaffed - but still they give out smiles and advice and directions to a park or lake or trail or event - where wouldn't they love to be.

It's always time and time overdue to thank the Summertime in the Belgrades columnists and contributors for their words and pictures and observations and specialties: to Dick Greenan for the fabulous photos of the loons and the highly-followed recordings of water levels; to Pete Kallin, the region's absolute best ambassador on the trails and the waters, as he roams and records his wonderful wanderings, to Martha Barkley who reveals so much about the region and the state through reviews of books relevant and sometimes unrecognized and to the individuals and organizations that cover the region's history and conservation and real estate and events.

Weekly programs have re-emerged, signature seasonal events are back on the schedule and doors are open on a regular basis to many of the area's amazing landmarks. It's time to plan an outing, a celebration, a tradition and it's time to turn the pages of Summertime in the Belgrades for suggestions, ideas, directions, connections.

It's time to reach for a young child's hand, the string of a kite, a fishing rod, lemonade from a lawn-side stand, sunscreen and Summertime in the Belgrades.

Here's to the waters, the fields, the woods and the hills beyond. Here's to a huge, small-time, best-time summer.

*Esther, Michael, Gregor, Cordell and Ethan*

**Summertime in the Belgrades**

PO Box 290, Belgrade Lakes, ME 04918

Editor: Esther J. Perne, 207-495-3777 • [sumbelnews@gmail.com](mailto:sumbelnews@gmail.com)

Layout Design: Michael Breault, 207-578-0226 • [mo.breault@gmail.com](mailto:mo.breault@gmail.com)

Webmaster : Gregor Smith • [gregor@roadrunner.com](mailto:gregor@roadrunner.com)

[www.belgradelakesnews.com](http://www.belgradelakesnews.com)

This publication is copyrighted ©MMXXIV, Cider Mill Press Publications, All Rights Reserved.

**McGRATH POND  
- SALMON LAKE  
ASSOCIATION**

*Stewards of our Belgrade Lakes*

**Join us at:**

<https://www.mcgrathpond-salmonlake.org>

**SUMMER CELEBRATION**

Featuring Bigelow Brewing

Sunday, July 14, 4-6 pm  
ALL ARE WELCOME!

7 Lakes Alliance, 137 Main Street, Belgrade Lakes



## New CEO Joins 7 Lakes Alliance

The Board of Directors of the 7 Lakes Alliance is pleased to announce the appointment of Dr. Chris Monz as Chief Executive Officer, succeeding Laura Rose Day who will serve as Chief Conservation and Special Initiatives Officer on a part-time basis at 7 Lakes as she reengages her work as a nationally-recognized dam removal expert.

Chris Monz has been a tenured professor in the Department of Environment and Society at Utah State University. In this role, he has been a key player in recreation resource management, focused on managing and protecting outdoor recreational settings, such as state and national parks and wilderness areas. Monz is a highly respected leader in land conservation that aims to provide exceptional outdoor experiences for visitors while safeguarding the health and beauty of natural resources for future generations.

Peter Kallin, 7 Lakes board co-chair and interim CEO, noted: "We are pleased to welcome Chris Monz and believe his proven experience in recreation ecology, leadership skills and commitment to conservation make him the right leader for 7 Lake's skilled team of dedicated lake and land conservationists at this time." Kallin added, "With Dr. Monz as CEO, we are confident that 7 Lakes Alliance will have continued success in meeting the pressures



Dr. Chris Monz

of increased recreational use of our lands and the growing challenges posed by climate change, including algal blooms and invasive species in our lakes."

Dr. Monz will officially join 7 Lakes on June 4th and is looking forward to joining the team at 7 Lakes and the Belgrade Lakes community. He is thrilled to be returning to Maine, where he received his masters degree in ecology at the University of Maine, Orono.

Monz noted, "I am particularly excited about being part of an organization of professionals who are dedicated to the fundamental work of science-based conservation, environmental education and community engagement. I started my career with a land trust in the Hudson Valley of New York, so working with 7 Lakes will be a return to the fundamental conservation work that has inspired me throughout my career. I fell in love with Maine as a graduate student and have family here, so it's a wonderful homecoming for me as well as an exciting opportunity to hopefully make a lasting impact on conservation work that is vital to the Belgrade Lakes region."

Chris and his wife, Wyatt, an educator with both higher and secondary education experience, enjoy hiking, rock climbing, Nordic skiing and kayaking. Their son, Jackson, attends Bates College.

## Memories and Tidbits from the Belgrade Historical Society

by Rod Johnson



The iconic Belgrade Hotel is pictured above in its heyday, complete with twin boat houses, breakwater and large dock. The hotel was opened about 1902, and burned in October of 1956.

No one seems to notice (and why would they), the white square in the upper right corner of the aerial photo. A marvel in itself, this is the large water tank on high legs that supplied the hotel all the water needed, in addition to several houses in the village when excess was available. Believe it or not, the pump that filled the tank on an "as needed basis", was located downtown by the dam, in what is now Carol Johnson's back yard adjacent to Long Pond. An early vintage make-and-brake engine propelled a large piston pump, which pushed the lake water up main street pipes to fill the tank. The rest was easy; gravity fed the hotel and houses below.

After the hotel closed in the late fall, the tank was drained for the winter. One of the rights of passage for the local boys, was to climb the steel service ladder that ran up the outside and peek down inside. The BRAVEST few even went down inside with the interior service ladder!

The original concrete slab where the blockhouse that housed the pump sat, is still very visible in Carol's yard, and now around 125 years old. The old tank sat proudly yet empty for the next couple of decades. It was eventually pulled over and cut up for scrap iron.

## Belgrade's Winterberry Farm: On to a New Era

"It's been a beautiful life," says Mary Perry of her beloved "one woman's farm" on Route 27 in Belgrade. Twenty-five years ago she purchased the 40-acre property with the iconic mansard-roof barn and 8-bedroom Victorian farmhouse on a whim and a dream and today, with many of her visions accomplished, Mary is heading toward new life goals.

Established in 1870 by the Vernon Foster family, Winterberry Farm was originally a small dairy of Jersey cows where butter was made and shipped to Boston from the nearby Belgrade train depot. Later the farm raised a large flock of sheep for meat and wool. The original barn was destroyed by fire in 1890 and the current one rebuilt soon after, incorporating many Shaker construction qualities and a state-of-the-art hay ventilation system. Today it is on the National Register of Historic Places.

In the 1950s, the living room of the farmhouse was the town office, run by Lauren Kelly, where residents would stop in to register their dogs or vehicles and pay property taxes. When Mary Perry purchased it in 1991, the property was vacant and ready for a lot of work.



Gil, Mary, Sage, Kenya

fresh vegetables for up to 300 members, supplied floral arrangements for enjoyment and special occasions, held numerous celebrations, including ox plowing day, cider pressing, sheep shearing and farm to table dinners and offered sleigh rides in winter. Three acres have been devoted to vegetables, supplemented by greenhouses, and a variety of animals have greeted guests and helped with running the farm.

"I started this farm and have always run it as a single Mom, single woman farmer. I am proud of what I have created and even prouder of the 3 children (Kenya, Gil and Sage) I have raised on this farm that are amazing humans and that know how to work and be creative with their choice of work."

For years, Winterberry Farm has offered summer, winter and fall CSA programs of certified organic

Continued on page 6...



## — Take It Outside —

# Welcome Back

by Pete Kallin

Greetings to the greater Belgrade Lakes Community and welcome back summer residents and visitors. When I was growing up and there was any kind of ruckus in the house, which was pretty common with six kids, my mother would tell us to, "Take it outside!" We would then head out to the woods behind the house to find something to do. My mother was a wise woman. Fifty years before Richard Louv wrote Last Child in the Woods in 2008, she had an innate understanding of "Nature Deficit Disorder" and knew that direct exposure to nature is essential for a child's healthy physical and emotional development. Louv and others later proved that kids who spend a lot of time outside are healthier, have longer attention spans, and are less likely to suffer from depression or childhood obesity. If you haven't read Louv's book, you should. I hope this column will inspire you to take advantage of all the outdoor recreation opportunities in our area and especially about the importance of getting youngsters outside and interacting with Mother Nature. Mother Nature is an amazing teacher and we can all learn from her, especially in these stressful times.



Combined Holland-VanDeusen Family.



Colby and Amber Tremblay with Ivy, Cayson, and Georgia



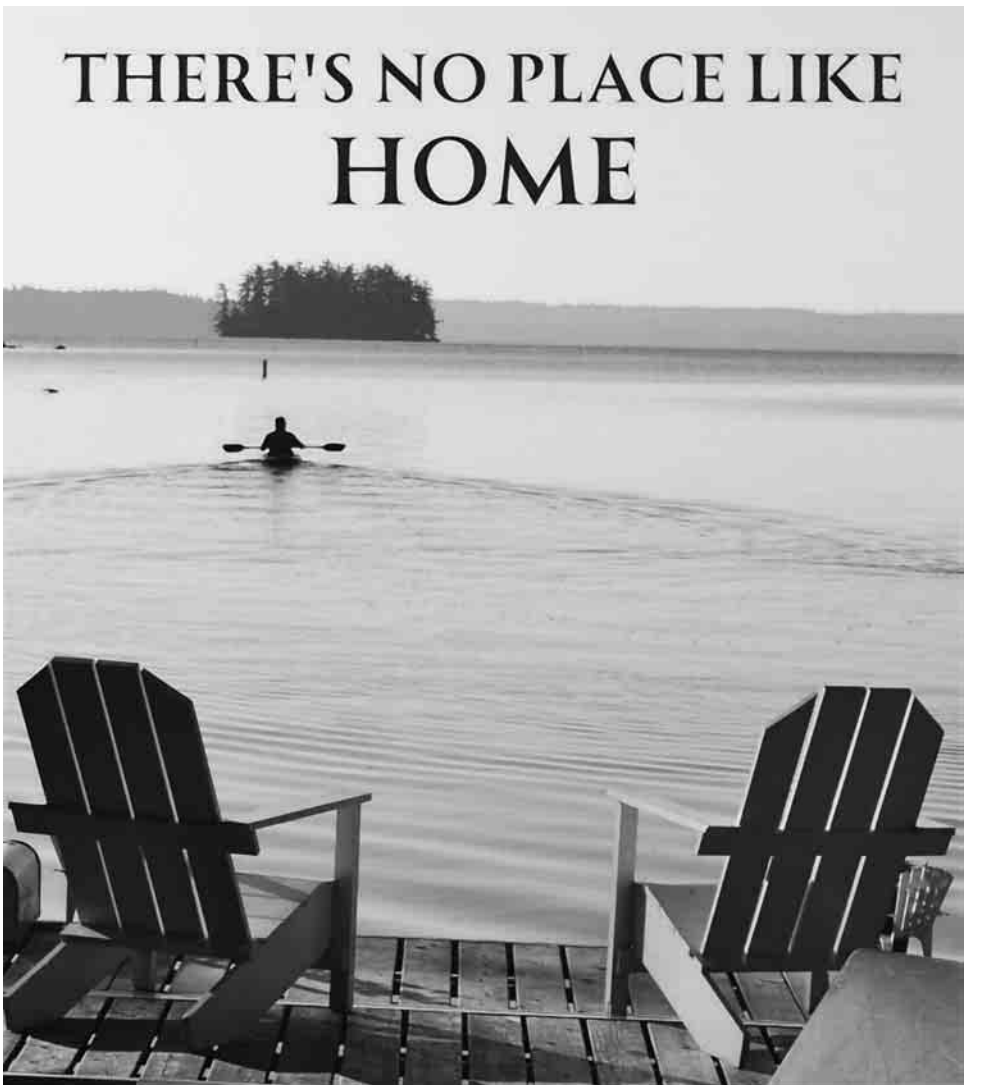
Grandson, "Bub," with two nice Long Pond rainbow trout he caught.

before. The fish are big, strong, and will hit small, weighted flies and jigs bounced along the bottom. They are a lot of fun to catch. By the time this article is published, the water temperature will be in the high 60's in most of our lakes and the bass will be off their own beds but

*Continued on page 2...*

During the recent pandemic, public health officials were consistent in telling us to "Take it outside." Staying physically active is one of the best ways to keep your mind and body healthy, and carefully planned and executed outdoor activities are inherently safer than indoor activities. 7 Lakes continues to add new properties and new trails. The hiking trails (including some new ones!) in the Kennebec Highlands and nearby 7-Lakes Alliance (former BRCA) properties like French Mountain, Mount Phillip, Fogg Island, and The Mountain are beautiful, verdant, and awash in spring and early summer wildflowers like trillium and lady slippers and birds and other wildlife. Visit the 7-Lakes Alliance website (<https://www.7lakesalliance.org/>) for the latest updates and to download maps of the trails. We have recently published a new version of our local Trail Map and Guide. It is available for purchase at Maine Lakes Resource Center as well as at Day's Store. The new Quill-Hill Mountain Trails off Drury Lane are scenic and not very steep, making them particularly appropriate for hiking with youngsters and oldsters.

For the third year in a row, the winter seemed to come and go, with snow followed by melting, rain, and then more snow and cold. Consistent with climate change predictions, there were several large rain events, which caused a lot of flooding and damaged a lot of docks. In the nearby Kennebec River, the alewives and shad have returned earlier than usual. Normally, these fish are still in the river in early June, and I highly recommend trying your hand with a flyrod or light spinning tackle, especially if you have never caught a shad



## THERE'S NO PLACE LIKE HOME

**MAINE-ly ELDER CARE**

"Caring for the ones who cared for us"

In - Home Nursing • Personal Care Services • Homemakers  
• Emergency Response Systems • Transportation Services

STATE REGISTERED PERSONAL CARE AND HOMEMAKER AGENCY    **465-3249**    28 Center St., Oakland, Me 04963

[www.Maine-lyElderCare.com](http://www.Maine-lyElderCare.com)    [denise@Maine-lyElderCare.com](mailto:denise@Maine-lyElderCare.com)

**COLDWELL BANKER**    **PLOURDE REAL ESTATE**

143 Silver St, Waterville | (207) 872-7650 | [cbplourde.com](http://cbplourde.com)



## Calendar

**Through Saturday 6/15** - "4:05 a Nocturnal Comedy," Lakewood Summer Theater, 474-7176, 76 Theater Road, Route 201, Madison.

**Friday 6/14-Sunday 6/16** - 40th Annual Trek Across Maine, American Lung Association fundraiser, Maine's biggest and best family reunion, 624-0312, Thomas Point Beach and Campground to Bates College to St. Joseph's College to Thomas Point.

**Friday 6/14 through Sunday 6/16** - The Maine Event Horse Show - Blue Ribbon BBQ, covered arena, concessions, free admission, 272-0082, Fairgrounds, Route 201, Skowhegan.

**Friday 6/14** - Guitarist Mike Pond and vocalist Debbie St. Pierre Robitaille presenting songs from the Eagles, Georgia Satellites, Lynyrd Skynyrd and more, 2 pm and 7 pm, free admission, 946-5311, Araxine Wilkins Sawyer Foundation, Sawyer Road, Greene.

**Saturday 6/15** - Maine Mega Yard Sale, rain or shine, to benefit the Franklin County Animal Shelter, 778-2638, Farmington Fairgrounds.

**Saturday 6/15** - Maine Agility League Fun Run, beginners welcome, \$35, 9 am-3 pm, [canineagilityleague@gmail.com](mailto:canineagilityleague@gmail.com), Union Fairgrounds, Union.

**Sunday 6/16** - Father's Day, take a Dad or Granddad or a friend who's like a Dad on a walk or a hike or fishing, share something to eat, tell jokes, let him treat you to ice cream.

**Monday 6/17** - Western Maine Foothills Band concert, 7-8:30 pm, Meetinghouse Square, Farmington.

**Tuesday 6/18** - Dani Tribesmen, Reggae at its finest, Rock on the River series, 7-8:30 pm, Hallowell Bandstand, Hallowell.

**Wednesday 6/19** - Buffer Planting and Native Plant Sale, Friends of Messaonskee, 4 guest speakers, sessions at 3:15 and 5:15 pm, 618-8763, Lakeside Lodge at Bangs Beach, Sidney.

**Wednesday 6/19** - Borderline Express, SummerFun Concert @ Mill Park, 6 pm, Water Street, Augusta.

**Thursday 6/20** - Volunteer Trail Day, help maintain, clear, get ready for the summer season, Blaisdell Trail in Rome, for details contact [dan.woughter@7lakesalliance.org](mailto:dan.woughter@7lakesalliance.org)

**Thursday 6/20** - Art in the Park: Rainbow Art, Pride theme, free and open for all ages, in collaboration with Waterville Creates, Colby College Museum of Art and Waterville Public Library, 3-5 pm, Castonguay Square, Waterville.

**Thursday 6/20** - Belgrade Historical Society Annual Meeting, featuring a short film from 1935 entitled: "The Building of Chandler Bros Pine Tree Grocery and Gas Station on Rte. 27 in Belgrade, Me," 6:30 pm, Center for All Seasons, Route 27, Belgrade Lakes.

**Thursday 6/20 through Sunday 6/23** - Blistered Fingers Family Bluegrass Music Festival, 873-6539, great bands, food, camping, Litchfield Fairgrounds, 30 Plains Road, Litchfield.



...Continued from page 4



In her cozy roadside stand, Mary has provided a wealth of preserved and baked goods, especially pies, pies, pies, all the while managing volunteers from the community and interns from all over the country and the world and

homeschooling her three children. The lands have been improved, the barn well maintained, the house completely re-done a room a year and the property registered as a Forever Farm.

Winterberry's next chapter could be a bed and breakfast, wedding venue, gentlemen's farm, family retreat or maybe even a continuation of its last quarter century.

"Once you own a farm," says Mary, "it is you, it becomes you and you become it..."

"We have left the soils and home and barn better than we found them and we hope to find someone else that will do the same..."

Mary will move in August to Northport Island off the Maine coast where she is planning a flower business, selling pies from a food truck and writing books about her farm experiences. Before that, Winterberry Farm will be hosting a big farewell dinner for the community on July 7, farm camps for children June 24-28 and July 22-26, 2 weekends of barn sales - June 21-23 and August 10-11 and an Open Farm Day (July 28) program. All summer there will be freshly baked pies every day, other baked goods and canned goods and an abundance of fresh vegetables and flowers at the farmstand.



## Gardiner To Host Vintage Car Great Race Finale

On Sunday, June 30, the finish line for the 2024 Great Race of antique and classic cars will be held in Historic Downtown Gardiner where from 1 to 5 pm everyone is welcome to admire the cars (sometimes kids even get to sit in them), meet the drivers and enjoy the shops, restaurants, parks, Kennebec Riverfront, theater, music and special downtown activities.

Starting in Owensboro, Kentucky with 135 cars, including 8 from Maine, the Great Race of 2024 will last 9 days, cover 2,300 miles and travel to 19 cities in 11 states. Teams and cars from Japan, England, Australia, Canada and every corner of the United States will participate. Among them will be two high school students from Maine who are docents at the Maine Classic

Car Museum in Arundel and will be riding in a 1961 Cadillac Sedan DeVille.

Cars built in 1974 and earlier are eligible and most entries date pre-1940s. The 1922 winner was a 1932 Ford Dirt Track Racer. A 1916 Hudson Pikes Peak Hillclimber, a 1916 Chevrolet and a 1918 American LaFrance are the oldest scheduled this year. The 2024 winner will receive \$50,000 of the \$150,000 total purse. The event was started in 1983 and takes its name from the 1965 movie, The Great Race.

For more information contact Gardiner Main Street at [info@gardinermainstreet.org](mailto:info@gardinermainstreet.org) or 582-3100.



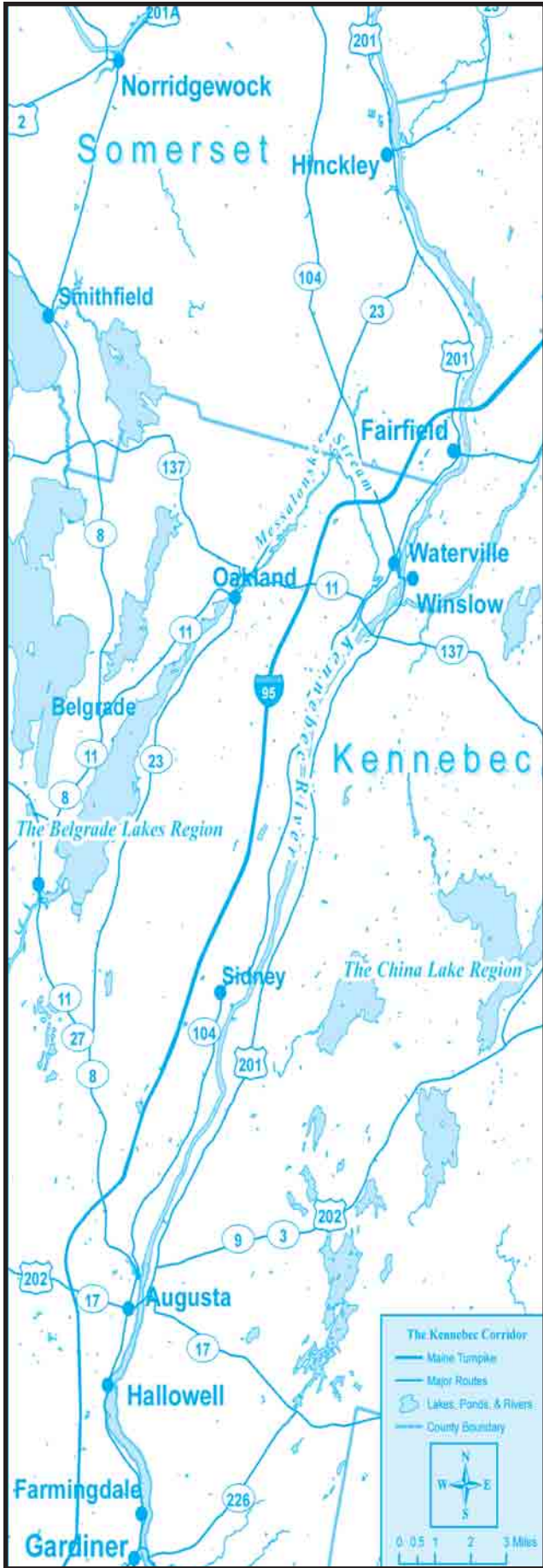
**GENERATORS of MAINE** INC.  
SALES • SERVICE • INSTALLATION  
[www.generatorsofmaine.com](http://www.generatorsofmaine.com) 207-495-2285  
[dan@generatorsofmaine.com](mailto:dan@generatorsofmaine.com)  
Professional Service At Fair Prices  
**KOHLER**  
IN POWER. SINCE 1920.

**Quality Used Books**  
THE Peoples BOOK SHOP  
8,000 Gently Used, Hand Picked, Eclectic and Popular Books  
605 Wings Mill Road  
Mount Vernon - 620-2392  
[hosehead51@roadrunner.com](mailto:hosehead51@roadrunner.com)  
Open by Appointment

**Assistance PLUS**  
Providing In-Home Personal Support Services in your Community for over 30 years.  
[www.assistanceplus.com/contact](http://www.assistanceplus.com/contact)  
1-800-781-0070



## — Along the Kennebec River Corridor —



### Weekly Directory

**Farmers' Markets:** breads, meats, baked goods, produce, preserves, flowers, fruit and vegetables in season.

- Tuesday** - Augusta Farmers' Market, 2-6 pm, Mill Park, Water Street.
- Wednesday** - Fairfield Farmers' Market, 2-6 pm, 81 Main Street, Nazarene Church Parking Lot, 81 Main Street.
- Wednesday** - Gardiner Farmers' Market, 2-6 pm, The Common
- Thursday** - Downtown Waterville Farmers Market, 2-6 pm, Head of Falls and Riverwalk.
- Friday** - Farmington Farmers' Market, 10 am-1 pm, parking lot near Better Living Center, Front Street.
- Saturday** - Farmington Farmers' Market, 9 am-12 noon, in front of Court House, Main Street.
- Saturday** - Hallowell Farmers' Market, 9 am-12 noon, Steven's Commons.
- Saturday** - New Sharon Farmers' Market, 9 am-1 pm, Douin's Market
- Saturday** - Skowhegan Farmers' Market, 9 am-1 pm, Somerset Grist Mill.
- Saturday** - Wayne Farmers' Market, 9 am-12 noon, on the Green at Mill Pond.
- Sunday** - Belgrade Lakes Farmers' Market, 9 am-2 pm, 7 Lakes Alliance, Main Street, Belgrade Lakes.

#### Outdoor Concerts

Enjoy a free, outdoor concert in central Maine's parks. Bring a lawn chair or blanket, arrive early to stroll around town, stay late at a local restaurant.

- Monday** - Farmington, Western Maine Foothills Band, 7-8:30 pm Meetinghouse Square
- Tuesday** - Hallowell, Rock on the River 2024, 7-8:30 pm, Hallowell Bandstand
- Wednesday** - Augusta, SummerFun Concerts @ Mill Park, 6 pm
- Thursday** - Belgrade Lakes, Village Green Music Series, 6:30-8 pm
- Thursday** - Oakland, Waterfront Music Series, Waterfront Park, 6-9 pm
- Friday** - Gardiner, Johnson Hall Free Waterfront Summer Concerts, 6-7:30 pm, some Saturday concerts, some times var
- Friday** - Waterville, Waterville Rocks, Head of Falls, beer garden opens 6 pm, music begins 7 pm; in case of rain show held inside Waterville Opera House
- Saturday and Sunday** - Sidney, New England Music Camp, Bowl in the Pines concerts, 3 pm
- Sunday** - Skowhegan, Concerts in the Park, Coburn Part, 5-6:15 pm
- Sunday** - Winthrop, Norcross Point, 2-4 pm

#### Cruise-Ins

- Thursday** - Gardiner, 5-7 pm, Waterfront Park

#### Classes, Camps and Programs for Students

##### Sailing:

**Belgrade Lakes** - SailMaine Youth Camp, ages 8-12 and 12-17, beginner and intermediate, Belgrade Community Center for All Seasons; weekly sessions 7/8-8/16. \$235; scholarships available. [SailMaine.org](http://SailMaine.org) or 235-3173.

##### Nature and Science:

- Hinckley** - Summer Day Camps at the L.C. Bates Natural History Museum, 6/24 through 7/29, age groups vary, 9-11 am, 238-4250
- Winthrop** - Kids Summer Nature Day Camp, Friends of the Cobbossee Watershed, 4th, 5th and 6th graders, July 22-26 and August 5-9, \$250, YMCA Camp of Maine, Cobbossee Lake, [www.watershedfriends.com](http://www.watershedfriends.com)

##### Theater:

- Gardiner** - Spark Theater Camp, Johnson Hall Opera House, 3 different classes - beginner to advanced, 2-week sessions, \$200 to \$250, scholarships available, 582-7144
- Madison** - Young Performers Camp, Lakewood Theater, ages 6-17, 6/24 through 8/16, \$500 to \$700, 474-7176
- Monmouth** - Camp Shakes, The Theater at Monmouth, grades 4-8, 2 one-week sessions, 7/8 and 7/15, 933-9999
- Waterville** - Missoula Children's Theatre Camp, Waterville Opera House, grades 1-8, two 1-week sessions, \$240, Waterville Opera House, 873-7000

Additions? Changes? Corrections? Please let us know: [sumbelnews@gmail.com](mailto:sumbelnews@gmail.com)



### HATHAWAY MILL ANTIQUES



**10,000 Sq. Ft. Showroom**  
Offering Quality Period Antiques  
to Mid-Century Modern

Open Wed. - Sun. 10am-5pm Closed Mon. & Tues.



[hathawaymillantiques.com](http://hathawaymillantiques.com)  
10 Water Street, Waterville  
207-877-0250

Like & Follow  
us on  
Facebook &  
Instagram!



**Make buying your home,  
a personalized experience.**

From a local bank, with local lenders that are available on your time and we won't sell your loan.\*





**Haley LaBrie**  
Community Banker  
NMLS 977748  
207.858.2523  
[hlabrie@skowhegansavings.com](mailto:hlabrie@skowhegansavings.com)

800.303.9511 • [Skowhegan.com](http://Skowhegan.com)

\*Excluding loans from Maine State Housing

**WHITE WILLOW**

RETREAT FOR DOGS

**BOARDING • DAYCARE • TRAINING**

1761 Augusta Road, Belgrade

207-495-3596 [WhiteWillowRetreat.com](http://WhiteWillowRetreat.com)

**Welcome to Belgrade Lakes...  
You could live here!**



*Ellen Wells*  
Certified Luxury Property Specialist



**COLDWELL BANKER** PLOURDE  
REAL ESTATE  
143 Silver St Waterville [cbplourde.com](http://cbplourde.com)  
207-649-1471 [ewells@cbplourde.com](mailto:ewells@cbplourde.com)



Design • Install • Maintain

LakeSmart Certified for all your waterfront needs!

- Plant Installations
- Plant Maintenance
- Patios
- Mowing
- Walkways
- Fertilizing
- Permeable Paver Driveways
- Weed and Tick & Mosquito Spray



Serving all of Central Maine!



(207)474-2420

www.lynchlandscaping.com

## GOLDEN POND

design • sitework • builders  
Waterfront Building Specialists  
207-649-9366



Golden Pond  
Foundation & Jacking Division



We specialize in difficult foundations

Call 495-3777 to advertise in  
Summertime in the Belgrades

## OptiLight

Call Us today for a Photofacial

Intense pulsed light (IPL) is a cosmetic skin treatment that reduces the signs of aging including:

- Sunspots
- Rosacea
- Unwanted Hair
- Spider Veins



EYE CARE OF MAINE

325A Kennedy Memorial Dr. Waterville, Maine 04901 (207) 873-2731 www.Maine2020.com

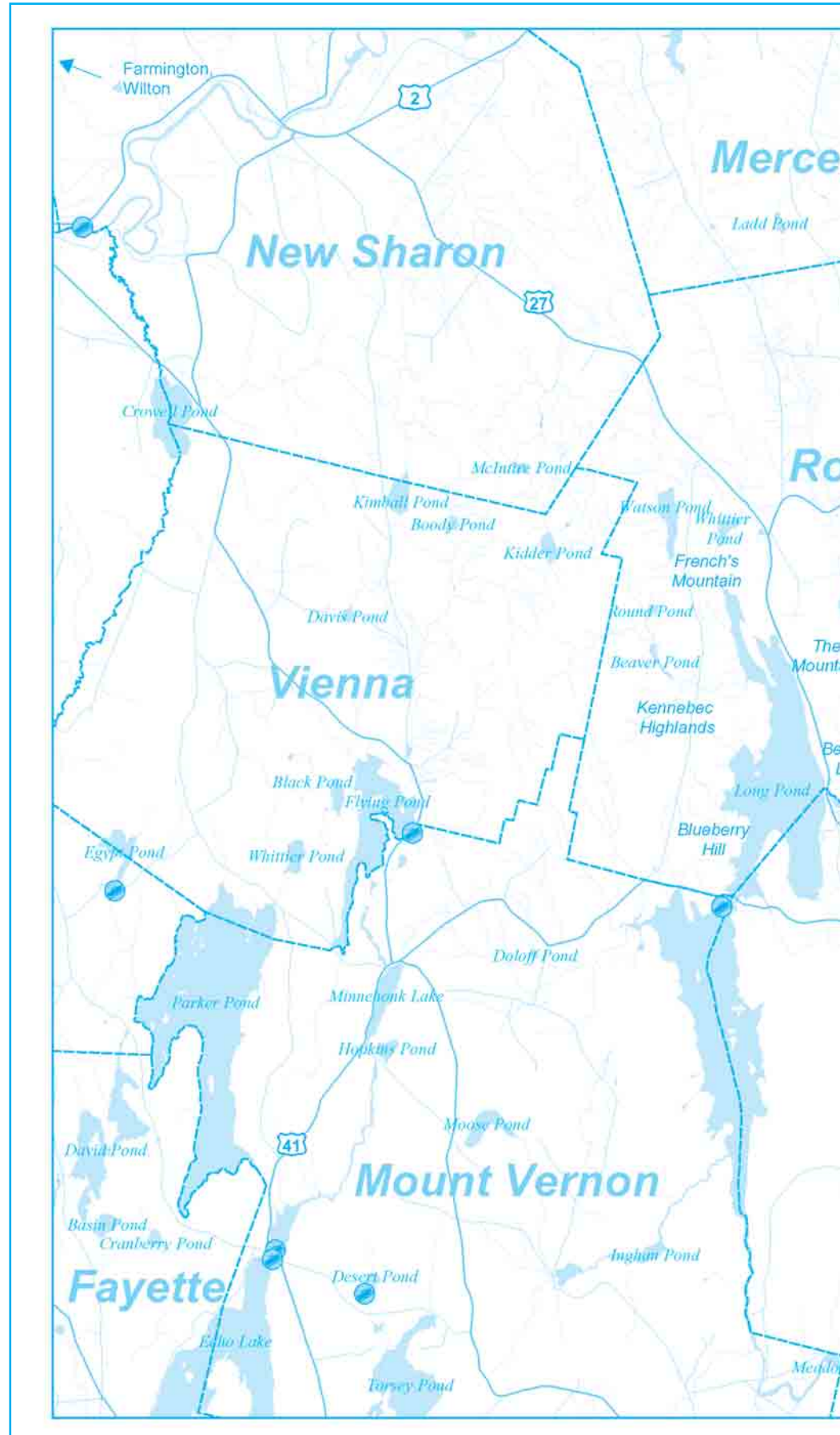


Winter Storage for Summer Vehicles

## Belgrade Lakes Marine & Storage, Inc.

207-495-2378 • www.belgradelakesmarine.com

366 Augusta Road, Route 27, Belgrade, ME



LONG POND – Absolutely beautiful, 2 bed 1 bath move-in ready home in the heart of Belgrade Lakes Village just a short distance to golf course & shared common lot with firepit, association dock & shared moorings on pristine Long Pond!

MLS 1568534

OFFERED AT: \$589,999

Trisha Cheney (207) 716-6494  
trisha@belgradelakepoint.com  
Stephanie Gardner (207) 592-5577  
stephanie@belgradelakepoint.com





## RIVERFRONT BARBEQUE & GRILLE

### WORLD CLASS BARBEQUE

SEAFOOD, PASTA, & VEGETARIAN ENTREES

207.622.8899

300 WATER STREET, AUGUSTA, MAINE

WWW.RIVERFRONTBBQ.COM

FULL SERVICE DINING ✕ CATERING ✕ BULK TAKE OUT

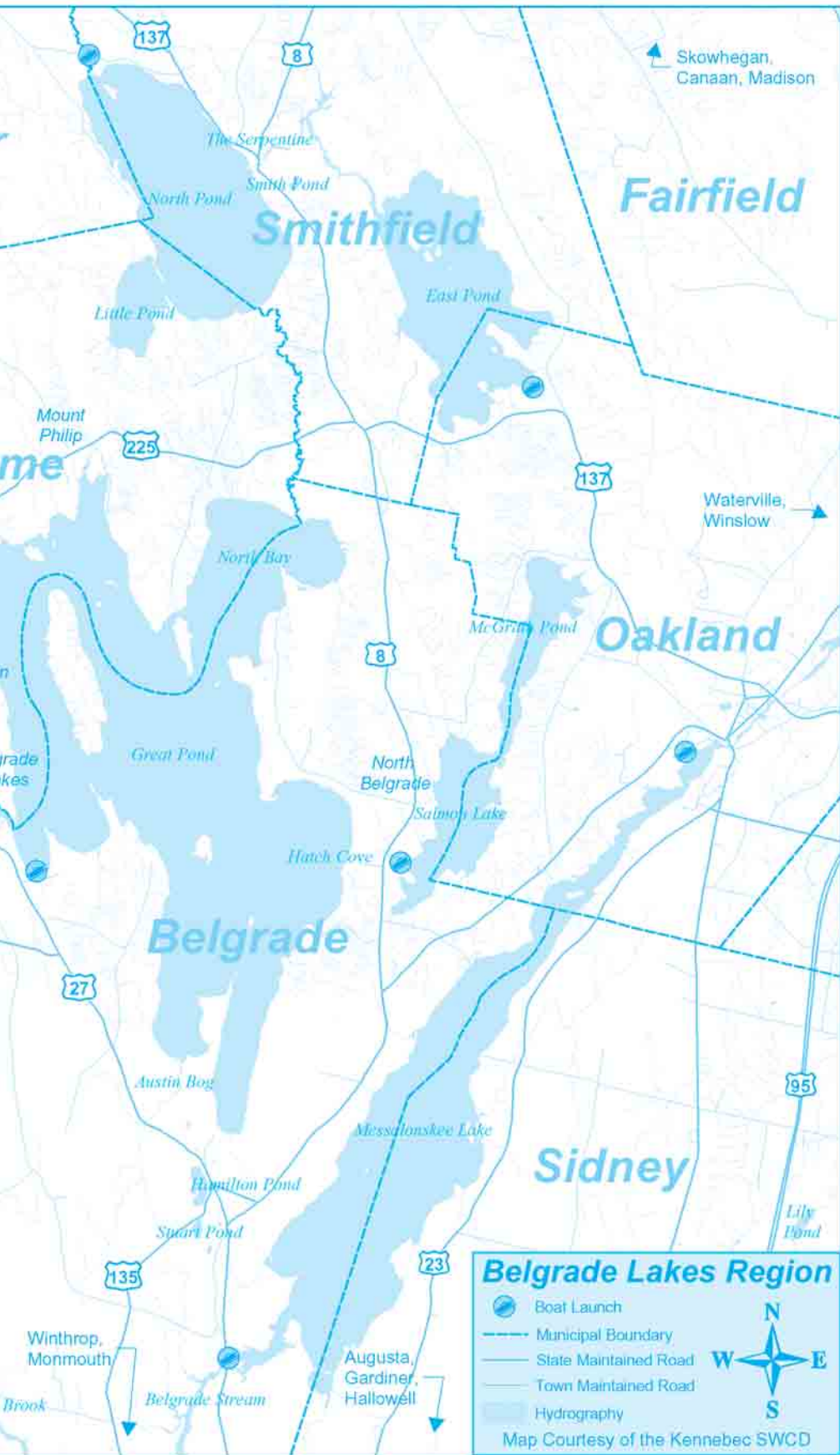


## The Gin Mill

Augusta, Maine

Augusta's finest upscale lounge featuring fine wine, martinis, and over 100 brands of beer from Germany to Japan

Thursday thru Saturday 3:00pm until Midnight,  
Above the Riverfront Barbeque & Grille  
at 300 Water Street  
207.620.9200



# BACKYARD LIVING BEGINS WITH US

Maine's largest manufacturer, dealer, and retailer of quality concrete and stone products, tools, installation supplies, and outdoor living accessories—backed by decades of exceptional craftsmanship and neighborly expertise.

207-495-3313 | 1583 Augusta Rd. Belgrade, ME 04917 | www.gagneandson.com  
Belgrade | Auburn | Holden | Kittery | Saco | Topsham | Westbrook

### Visit the Businesses on Marina Drive

## Great Pond Marina, Inc.

COME VISIT US TODAY

**FUEL DOCK: Non-Ethanol Gas**  
90 Octane with **VALVTECT**

- **Marine Store:** O'Brien & Jobe Watersports- Tubes, Skis, Wake Boards, ropes, vests, floats.
- **Dock & Mooring:** Custom Mooring Systems, Dock Lines, Bulk Rope, Boat & Dock Fenders, Mooring Buoys, Chain, Hooks, Shackles

Hours 9-4 Daily

Info@greatpondmarina.com WWW.GREATPONDMARINA.COM

July 31, 2024

12 - 10 PM

Head of Falls, Waterville

- Food Vendors
- Brew Tastings
- Cornhole Tournament
- All-Day Music
- Beer & Wine Gardens
- Evening Concert

For more information visit: [www.tasteofwaterville.com](http://www.tasteofwaterville.com)

sadiesboathouse@hotmail.com  
• 207-495-4045 •  
Like us on Facebook!  
Friday-Saturday 5-9 PM

## G & L CONTRACTING

Camp Jacking

207-495-9009

[www.gandlcontractingmaine.com](http://www.gandlcontractingmaine.com)



**CHILDREN'S BOOK CELLAR**

**BOOKS, PUZZLES, TOYS, GAMES**

A store for children of all ages, the young and the young at heart.

Open Monday 12 to 5 • Tues. – Sat. 9 to 5  
52 Main St. Waterville 872-4543

**THAYER ENGINEERING CO.**

**TE**

Land Surveyors  
Civil Engineers  
Planners

**Elliot B. Thayer, PLS, PE**  
**Andrew Dunbar, PLS, LPF, LSE**

**PROFESSIONALS WITH LONGSTANDING TIES TO THE BELGRADE LAKES REGION**

17 Hasson Street  
Farmingdale, ME 04344-1613  
582-7762  
www.thayereng.com

**SWIM-FISH-FUN**

**ALDEN CAMPS**

OAKLAND, MAINE

- Lakeside Cottages • Boats & Motors
- Full American Plan
- Dining on the porch by reservation

**3 Alden Camps Cove**  
Oakland, Me 04963  
(207-465-7703)

E-mail: info@aldencamps.com • Website: www.aldencamps.com

www.belgradehistoricalsociety.org

Check the events section in *Summertime in the Belgrades* for our latest programs or find us on Facebook.

Always looking for new members!

**Belgrade Historical Society, Inc.**  
P.O. Box 36A  
Belgrade, ME 04917

*As an IRS 501c3 non-profit organization, contributions may be tax deductible.*

**For your jacking and leveling needs, including sill repair, call Eric Lancaster**

*"Over 25 years experience."*

**207-634-2821**

**Kevin Couture Photography**

HIS Seniors - Weddings - Families  
Aerial images via drone

www.kevincouturephotography.com  
Also find me on Facebook

207.474.0754 207.858.5382  
kevin@kevincouturephotography.com

## Town by Town

Great visits, awesome outings – art, music, culture, history, recreation, trails, scenic sites and more...

### Augusta

#### Capitol Complex

- **Maine State House**, completed 1832, Hall of Flags, House and Senate Chambers, Klir Beck wildlife dioramas, Mon-Fri 8 am-5 pm, tours available, 287-2301
- **Art in the Capitol**, Maine Arts Commission monthly self-guided exhibits in State House hallways (Mon-Fri 8 am-5 pm), Blaine House (call for times), Cross Building and Maine Arts Commission Office (8:30am-4:30 pm), 287-6746, [mainearts.maine.gov](http://mainearts.maine.gov)
- **Governor's Mansion**, 1830 Blaine House, Tuesday-Thursday 2-4 pm, 287-2121, [www.blainehouse.org](http://www.blainehouse.org), State Street

#### University of Maine at Augusta

- **Danforth Gallery** art exhibits, Jewett Hall, UMA-1234, [www.uma.edu](http://www.uma.edu)
- **Holocaust and Human Rights Center of Maine**, Michael Klahr Center, Monday-Friday 8 am-4 pm, 621-3530, [www.hhrc.uma.edu](http://www.hhrc.uma.edu), University of Maine at Augusta

#### Historic Visits

- **Kennebec Historical Society**, Wednesday-Friday 10 am-2 pm, 622-7718, [www.kennebechistorical.org](http://www.kennebechistorical.org), 107 Winthrop Street
- **1754 fort**, house, store, 1-4 pm daily, admission \$6, 4-14 years \$4, 626-2385, [www.oldfortwestern.org](http://www.oldfortwestern.org), Cony St

#### Parks and Trails

- **Museum in the Streets**, walking/history tour, [www.augustamaine.gov](http://www.augustamaine.gov), Water Street/downtown
- **Riverfront Park**, boat launch, Greenway Trail, playground, eastside Kennebec River
- **Kennebec River Rail Trailhead**, Maine State Housing Authority parking lot, 623-8162, [www.krrt.org](http://www.krrt.org), Water Street
- **Viles Arboretum**, 224 acres with 6 miles of year round walking trails, including art and sculpture trail, open dawn to dusk, Visitor Center open Monday-Friday, 9 am-4 pm, admission free, 626-7989, [www.vilesarboretum.org](http://www.vilesarboretum.org), 153 Hospital St
- **University of Maine at Augusta Fitness Trail**, 2 miles of wood-ed trails, near Civic Center

#### Belgrade Lakes

- **Great Pond Mailboat**, 215-7520, Monday-Saturday 10 am, Post Office, Main St
- **The Belgrade Community Center for All Seasons**, pool and lakefront, gym, playground, picnic area, rec programs, 495-3481, [www.belgrademaine.com](http://www.belgrademaine.com), 1 Center Dr
- **Belgrade Historical Society**, 465-7924, [belgradehistoricalsociety.org](http://belgradehistoricalsociety.org)
- **Peninsula Park** on Long Pond, picnic tables, Main St
- **Village Green**, gazebo, benches, picnic site
- **7 Lakes Alliance**, educational center, 512-5150, [www.7lakesalliance.org](http://www.7lakesalliance.org), 137 Main St

#### Fairfield

- **Fairfield Historical Society**, 1894 Cotton-Smith Victorian Mansion, Tues 10 am-3 pm, 453-2998, [www.fairfieldmehistoricalociety.net](http://www.fairfieldmehistoricalociety.net), 42 High St

#### Farmington

- **Farmington Historical Society**, Titcomb House Museum, 778-2835, Fri 10 am-2 pm, 118 Academy St
- **Nordica Homestead Museum**, opera singer Lillian Nordica costumes, jewelry, mementos, 778-2042, Tues-Sun 1-5 pm, [www.lillianmordica.com](http://www.lillianmordica.com), 116 Nordica Lane
- **University of Maine campus and Arboretum**, four walking tours with informal guide pamphlet to campus trees, [www.umaine.edu/arboretum/](http://www.umaine.edu/arboretum/), downtown
- **Fairgrounds**, events throughout summer, Franklin County Fair in September, High Street

#### Gardiner

- **Johnson Hall Performing Arts Center**, 582-7144, [www.johnson-hall.org](http://www.johnson-hall.org), 280 Water St
- **Kennebec River Rail Trail**, 623-8162, [www.krrt.org](http://www.krrt.org), access near Gardiner/Randolph Bridge, 6.5 miles to Augusta
- **Waterfront Park**, events throughout summer, Kennebec River

#### Greene

- **Araxine Wilkins Sawyer Memorial**, free entertainment programs, 2x month - Friday 2 and 7 pm, 946-5311, [www.sawyer-foundation.com](http://www.sawyer-foundation.com), 371 Sawyer Rd

#### Hallowell

- **Gaslight Theater**, 626-3698, [www.gaslighttheater.org](http://www.gaslighttheater.org) City Hall, 1 Winthrop Street
- **Vaughn Woods and Homestead**, 166 acre park/trails/homestead, Middle Street
- **Kennebec River Rail Trail**, [www.krrt.org](http://www.krrt.org), to Augusta, Farmingdale/Gardiner, Water Street
- **Waterfront Park**, deck/walkway on Kennebec River, North Water Street to Museum in the Streets, history/walking tour, [www.historichallowell.org](http://www.historichallowell.org), downtown

#### Hinckley

- **L.C. Bates Museum at Good Will-Hinckley School**, early 20th century natural history and cultural exhibits, nature trails and day camps, 238-4250, [www.gwh.org](http://www.gwh.org) Wed-Sat 10 am-4:30 pm, Rt 201

#### Kingfield

- **Stanley Museum**, 265-2729, [www.stanleymuseum.org](http://www.stanleymuseum.org), memorabilia/displays on photographs, violins and Stanley Steamers, Tuesday-Sunday 1-4 pm, 40 School Street
- **Ski Museum of Maine**, Carrabassett Valley, 237-0064, [www.maineskiandsnowboardmuseum.org](http://www.maineskiandsnowboardmuseum.org), Thur-Sat 10:30 am-4 pm, Access Rd

#### Livermore

- **Washburn-Norlands Living History Center**, 18th-19th century mansion/farmstead/schoolhouse, library, chapel, 897-4366, [www.norlands.org](http://www.norlands.org), admission, living history tours Tuesday and Thursday 1-4 pm, 290 Norlands Road

#### Madison

- **Lakewood Theater**, Maine's Summer Theater, Young Performers Camp, Lakewood Inn Restaurant, 474-7176, [www.lakewoodtheater.org](http://www.lakewoodtheater.org), Rte 201
- **Skowhegan School of Painting and Sculpture**, 474-9345, [www.skowheganart.org](http://www.skowheganart.org), East Madison Rd

#### Monmouth

- **Monmouth Museum**, local and regional Maine history, Wed, Sat 10 am-3 pm, 933-2287, [www.monmouthmuseuminc.org](http://www.monmouthmuseuminc.org), 751 Main St
- **The Theater At Monmouth**, The Shakespeare Theater of Maine, Cumston Hall, 933-9999, [www.theateratmonmouth.org](http://www.theateratmonmouth.org), Main St

#### Mount Vernon

- **D.E.W. Haven**, Maine Zoo and Rescue, 293-2837, 918 Pond Rd, Rte 41

#### New Portland

- **Nowetah's American Indian Store and Museum**, 628-4981, [www.nowetahs.webs.com/](http://www.nowetahs.webs.com/), daily 10 am-5 pm, free, 2 Colegrove Rd, Rte 27
- **Wire Bridge**, 1864, probably only wire suspension bridge in U.S.

#### Norridgewock

- **Norridgewock Historical Society Museum**, 1837 Female Academy, open by appointment, 634-5032, [www.norridgewock.com](http://www.norridgewock.com), Mercer Road, Rte 2
- **Oosoola Park**, picnic area, great playground, boat launch, on Kennebec River, Rte 8

#### Oakland

- **Town Parks**, playground, picnic tables, swimming area, boat launch area, Belgrade Road on Lake Messalonskee and McGrath Pond Road on McGrath Lake

#### Readfield

- **Readfield Union Meeting House**, 22 Church St
- **Readfield Historical Society and Museum**, 1853 schoolhouse, 377-2299, [www.readfieldhistorical.org](http://www.readfieldhistorical.org), Thursday and Saturday 10 am-2 pm or by appointment, 759 Main St, Route 17

#### Rome

- **Trails**: Mount Philip, Route 225; The Mountain, Route 27; French's Mountain and Kennebec Highlands, Watson Pond Road; for information call 495-6039 or visit [www.7lakesalliance.org](http://www.7lakesalliance.org); maps available at 7 Lakes Alliance, 137 Main St, Belgrade Lakes

#### Sidney

- **Snow Pond Center for the Arts**, Bowl-in-the-Pines live music venue, 465-9648, 8 Goldenrod Lane, Rte 23
- **Sidney Historical Society**, 724-8032, [www.sidneyhistoricalsociety.org](http://www.sidneyhistoricalsociety.org), 2986 Middle Rd
- **Silver Spur Riding Club**, horse shows and barrel racing, River



## Notebook

### MHS Golf Tournament at Natanis

• Start the summer with a great golf tournament! Messalonskee High School Class of 2026 will be hosting its 2nd Annual 'Nest at Natanis' Golf Tournament on June 28 to raise money for Project Graduation. The tournament will have a 9 am shotgun start and offers prizes for 1st, 2nd and 3rd places. There will also be a Silent Auction and fun competitions including a long drive hole, closest to the pin hole, putting contest and 50/50 raffle. To register visit: [app.eventcaddy.com/events/nest-at-natanis-golf-tournament](http://app.eventcaddy.com/events/nest-at-natanis-golf-tournament). For more information email [rsucy@rsu18.org](mailto:rsucy@rsu18.org). Natanis Golf Club is located at 135 Webber Pond Road, Vassalboro.

### Waterville Opera House Auditions

• On Sunday, June 16 at 4 pm and Monday, June 17 at 6 pm, there will be auditions for Miss Holmes Returns, a play about a nurse and activist on the run for murder who solicits the aid of Miss Sherlock Holmes and Dr. Dorothy Watson. The callback will be June 20 at 6 pm; the play will be presented at the end of August and early September. The audition location is Studio 1902, Paul J. Schupf Art Center, 93 Main St, 2nd floor. 873-7000

### Boaters "Clean, Drain, Dry" Law

• Fighting invasive aquatic plants! Effective last summer, boaters are now required to drain their watercraft prior to entering a water body or leaving a launch site. This includes hull drain plugs, bailers, live wells, ballast tanks and any area containing water (excluding live bait containers). The draining must be done in a way that does not allow drained water to enter any inland water of the state. The law reduces the risk of spreading aquatic invasive species, including some that are not always visible by eye, and is similar to laws already in effect in 20 other states, including New Hampshire and Vermont. It also will limit the spread of aquatic invasive species already in Maine. On many lakes, Courtesy Boat Inspectors will be available to advising on the draining.

### Call for Maine Artists

• Art for the enjoyment of patients, visitors, staff! MaineGeneral Medical Center invites artists to exhibit their work in the cafe and cafeteria at the Alford Center for Health in Augusta and the welcome area and lab in the Thayer Center for Health in Waterville. Art that creates a positive and uplifting environment is desired, is priced in the range of \$300 or less and no more than \$1,200 and must remain on view for the entire agreed-upon period - usually 6-8 weeks. The committee receives a 20 percent commission on sales which is used to purchase artwork for permanent display in the many MGMC facilities. For specific application instructions and submissions and artwork preparation, visit <https://www.maine-general.org/about-us/mgmc-art-committee/> or call 626-1243.

### Maine Authors Book Festival

• Maine authors from many genres, participating organizations, including the Knox Museum and the Thomaston Public Library, fabulous food and live

music by Don and Cindy Roy will gather from 11 am-4 pm on Saturday, August 26 at 12 High Street in Thomaston. Free admission includes author signings, a children's area hosted by the Coastal Children's Museum, books for sale, presentations and a raffle. Sponsored by the Maine Authors Publishing Cooperative. [www.mainebookfestival.com](http://www.mainebookfestival.com)

### Maine Lakes Conference 2024

• Discover the latest advancement in lake preservation, join other lake enthusiasts, learn from top experts! The Maine Lake Conference 2024, hosted by Lake Stewards of Maine and Maine Lakes, will be held on the University of Maine Farmington campus on Friday, July 21 with a day-long schedule of workshops, speakers, lunch and association networking. Keynote speakers will be Adam Daigneault, Associate Professor, and Melissa Genoter, recent UMaine graduate, will present the results of a 3-year study evaluation the role of lakes in the state's economy. Registration is closed but interested parties should contact [lakeconference-maine.org](http://lakeconference-maine.org)

### Neighbors Driving Neighbors

• Neighbors Driving Neighbors (NDN), whose mission is to provide volunteer drivers for residents of the communities of Belgrade, Fayette, Mount Vernon, Readfield, Rome and Vienna who do not drive, is the recipient of a \$10,000 grant from the Maine Council on Aging through Hannaford Supermarkets' Connection, Health and Equity Through Food program. The grant will help to recruit younger drivers and new riders and to expand rides to food pantries, medical centers, grocery stores and socialization services. [www.neighborsdrivingneighbors.org](http://www.neighborsdrivingneighbors.org)

### Belgrade

• Belgrade Business Group Plans 4th of July Festivities! Music, food, kids' activities, food trucks, fireworks and two parades (boats on the stream at noon and floats on Main Street at 4 pm) are on the schedule for the upcoming 4th of July. Starting with fireworks over Long Pond on July 3 and celebration will continue all day on the 4th from 10 am until late afternoon. Shops and stores will be offering specials and there will be music at several venues.

### Farmington

• A week of jazz concerts! The University of Maine at Farmington, UMF Jazz Camp for middle and high school students offers a solid week of jazz concerts July 7 through 13. Faculty concerts will be at 8 pm, July 7-11; student concerts at 6:30 pm, Friday 7/12 and 10 am, Saturday 7/13. 718-499-9051, [mainejazzcamp@earthlink.net](mailto:mainejazzcamp@earthlink.net)

### Waterville

• There will be a free open house at the Children's Discovery Museum of Central Maine on Saturday, June 15, 11 am to 3 pm which will include a preview of the new exhibit hall, opening this summer. Activities will include the Mobile Museum set up for play, live entertainment including music and performances, face painting and Fresh Ella's Ice Cream. The museum is located at 7 Eustis Parkway. 872-6643

## LakeHouse™ Design Build

Traditional Style Camps,  
Cottages and  
Lakefront Homes



Design • Build • Renovate

[lakehousedesignbuild@gmail.com](mailto:lakehousedesignbuild@gmail.com)

207.242.3663



### ACME LAND SURVEYING, LLC

Professional Land Surveyors – Professional Foresters  
Property Surveys, Subdivisions, Topographic Surveys, MLIs,  
Elevation Certificates/LOMAs, ALTA/ACS Surveys,  
Deed Research, Wetland Delineation, Forest Management

108 Fairbanks Rd., Suite 5  
Farmington, ME 04938

Website: [www.acmelandsurveying.com](http://www.acmelandsurveying.com)

Tel. (207) 778-4081  
Toll Free (800) 778-4081

Email: [info@acmelandsurveying.com](mailto:info@acmelandsurveying.com)

Specializing In

## CAMP JACKING AND LEVELING

Webster & Son  
19 Webster Way  
Belgrade, ME 04917

Sill Replacement  
Retaining Walls  
Barn Repair

(207) 313-8439

35+ Years Experience

## DAVID STEVENS

Excavation & Septic Systems



LOAM GRAVEL SAND

465-3815

Cell: 314-0314

P.O. Box 146 • Belgrade, Maine 04917



Oliver & Friends  
BOOKSHOP

Wednesday - Friday:

10 am - 6 pm

Saturday: 10 am - 5 pm

Sunday: 10 am - 5 pm

207-707-2123

[www.oliverandfriendsbookshop.com](http://www.oliverandfriendsbookshop.com)

150 Main Street, Unit 101, Waterville



622-6353

J & M Logging, Inc.  
Firewood

Cut to order in  
lengths from  
14" to 23"

Green Certified Wood,  
Seasoned & Ash  
Cut, Split & Delivered

853 Civic Center Drive, Augusta, ME 04330





## -Business Directory-

### ANTIQUES

**Hathaway Mill Antiques**, Multi-Dealer Emporium, 10 Water Street, Waterville, 877-0250, [www.hathawaymillantiques.com](http://www.hathawaymillantiques.com)

### APPLE ORCHARDS

**The Apple Farm**, 104 Back Road, Fairfield, 453-7656, [www.applefarm.us](http://www.applefarm.us)

### ARCHITECTS

**Bench & Field Architecture, LLC**, Andrew Hankermeyer, Maine Licensed Architect, residential homes, cottages and light commercial, 649-2561, [ahankermeyer@gmail.com](mailto:ahankermeyer@gmail.com)

### ARCHITECTURAL DESIGN

**LakeHouse Design Build**, 17 Birchwood Road, Augusta, 242-3663, 512-8161, [www.lakehousedesignbuild.com](http://www.lakehousedesignbuild.com), [lakehousedesignbuildmaine.com](http://lakehousedesignbuildmaine.com) housz

### ARTS

**Designing Women**, bridging art and community, [www.designingwomen.org](http://www.designingwomen.org)

**High Peaks Artisan Guild**, art gallery open Friday, Saturday, Sunday 11 am-5 pm, other times by chance or appointment, 245 Main Street, Kingfield, 340-1045, [highpeaksartisanguild.homestead.com](http://highpeaksartisanguild.homestead.com)

**Waterville Creates**, 10 Water Street, Suite 106, Waterville, 616-0292, [www.watervillecreates.org](http://www.watervillecreates.org)

### AUTOMOBILE STORAGE

**Belgrade Lakes Marine & Storage, Inc.**, 366 Augusta Road (Rte. 27), Belgrade, 495-2378, [www.belgradelakesmarine.com](http://www.belgradelakesmarine.com)

### BANKING

**Skowhegan Savings**, Augusta, Waterville, Farmington, Skowhegan and 7 more central Maine Branches, 1-800-303-9511, [www.skowhegan.com](http://www.skowhegan.com)

### BOAT COVERS

**Covers It All Upholstery & Canvas**, 1042 Kennedy Memorial Drive, Oakland, 465-7847, [www.watervilleupholstery.com](http://www.watervilleupholstery.com)

### BOAT LIFTS

**Hammond Lumber Company**, at 21 locations: Auburn, Bangor, Bar Harbor, Belfast, Belgrade, Blue Hill, Boothbay Harbor, Brunswick, Bucksport, Calais, Camden, Cherryfield, Damariscotta, Ellsworth, Fairfield, Farmington, Greenville, Machias, Portland, Rockland, Skowhegan, 1-866-HAMMOND, [www.hammondlumber.com](http://www.hammondlumber.com)

### BOAT MOORINGS

**Great Pond Marina**, 25 Marina Drive (off Rte. 27), Belgrade Lakes, 495-2213, [www.greatpondmarina.com](http://www.greatpondmarina.com)

### BOAT RENTALS

**Great Pond Marina**, 25 Marina Drive (off Rte. 27), Belgrade Lakes, 495-2213, [www.greatpondmarina.com](http://www.greatpondmarina.com)

### BOAT SALES AND SERVICES

**Mid-Maine Marine Inc.**, 885 Kennedy Memorial Drive, Oakland, 465-2146 or 800 649-2628, [www.midmainemarine.com](http://www.midmainemarine.com)

### BOAT STORAGE

**Belgrade Lakes Marine and Storage, Inc.**, 366 Augusta Road (Rte. 27), Belgrade, 495-2378, [www.belgradelakesmarine.com](http://www.belgradelakesmarine.com)

**Great Pond Marina**, 25 Marina Drive (off Rte. 27), Belgrade Lakes, 495-2213, [www.greatpondmarina.com](http://www.greatpondmarina.com)

**Mid-Maine Marine Inc.**, 885 Kennedy Memorial Drive, Oakland, 465-2146 or 800-649-2628, [www.midmainemarine.com](http://www.midmainemarine.com)

### BOOKS

**Children's Book Cellar**, 52 Main Street, Waterville, 872-4543, [www.facebook.com/ChildrensBookCellar](http://www.facebook.com/ChildrensBookCellar)

**Oliver and Friends Bookshop**, 150 Main Street, Waterville, 707-2123

**Peoples Book Shop**, used books, 605 Wings Mill Road, Mount Vernon, 620-2392, [hosehead51@roadrunner.com](mailto:hosehead51@roadrunner.com)

### BUILDERS

**G&L Contracting**, 116 Lakeshore Drive, Belgrade Lakes, 215-7951, 495-2325, 233-7408, [gandlcontractingmaine.com](http://gandlcontractingmaine.com)

**LakeHouse Design, Build**, 17 Birchwood Road, Augusta, 242-3663, 512-8161, [www.lakehousedesignbuild.com](http://www.lakehousedesignbuild.com)

### BUILDING MATERIALS

**Hammond Lumber Company**, at 21 locations: Auburn, Bangor, Bar Harbor, Belfast, Belgrade, Blue Hill, Boothbay Harbor, Brunswick, Bucksport, Calais, Camden, Cherryfield, Damariscotta, Ellsworth, Fairfield, Farmington, Greenville, Machias, Portland, Rockland, Skowhegan, 866-HAMMOND, [www.hammondlumber.com](http://www.hammondlumber.com)

### CAMP JACKING AND LEVELING

**Eric Lancaster**, Norridgewock, 634-2821, [ejlancaster77@gmail.com](mailto:ejlancaster77@gmail.com)

**Webster Camp Jacking and Leveling**, 32 Webster Way, Belgrade, 313-8439

### CHAMBERS OF COMMERCE

**Mid-Maine Chamber of Commerce**, 50 Elm Street, Waterville, 873-3315, [www.midmainechamber.com](http://www.midmainechamber.com)

### CIVIL ENGINEERS

**Thayer Engineering**, septic design, storm water mitigation, permitting, 17 Hasson Street, Farmingdale, 582-7762, [www.thayereng.com](http://www.thayereng.com)

### COMPUTER CONSULTANTS

Macintosh Solutions Consultant Michael Breault, 24 Welch Road, Wilton, 578-0226, [www.michaelbreault.net](http://www.michaelbreault.net)

### DINING

**Alden Camps**, lunch or dinner by reservation, Saturday-Wednesday space permitting, 3 Alden Camps Cove, Oakland, 465-7703, [www.aldencamps.com](http://www.aldencamps.com)

**H.J. Blake's for Goodness Sake's**, fresh, homemade, tasty take out, signature lobster rolls, hot dogs, burgers, scenic outdoor seating, 945 West Road, Belgrade, 465-2280

**Riverfront Barbecue & Grille and Gin Mill Lounge**, world class barbecue, seafood, pasta and vegetarian entrees, full service dining, catering, bulk take out, 300 Water Street, Augusta, 622-8899, [www.riverfrontbbq.com](http://www.riverfrontbbq.com)

**Sadie's Boathouse Restaurant** at Great Pond Marina, hearty contemporary American fare, 25 Marina Drive, Belgrade Lakes, 495-4045, 242-1273

### DOCKS

**G&L Contracting**, installation only, 116 Lakeshore Drive, Belgrade Lakes, 495-9009, 215-7951, 233-7408, [gandlcontractingmaine.com](http://gandlcontractingmaine.com)

**Hammond Lumber Company**, at 21 locations: Auburn, Bangor, Bar Harbor, Belfast, Belgrade, Blue Hill, Boothbay Harbor, Brunswick, Bucksport, Calais, Camden, Cherryfield, Damariscotta, Ellsworth, Fairfield, Farmington, Greenville, Machias, Portland, Rockland, Skowhegan, 866-HAMMOND, [www.hammondlumber.com](http://www.hammondlumber.com)

### DOG CARE AND TRAINING

**White Willow Retreat for Dogs**, including daycare, boarding, training and grooming, 24/7 services year round, training offered through Empathy Over Ego with Katie Powers, 495-3596, [www.whitewillowretreat.com](http://www.whitewillowretreat.com)

### ELDER CARE

**Assistance Plus**, home care services, personal care, homemaking, companionship, 1-800-781-0070, [www.assistanceplus.com](http://www.assistanceplus.com)

**Maine-ly Elder Care**, 28 Center Street, Oakland, 465-3249, [www.maine-lyeldercare.com](http://www.maine-lyeldercare.com)

### EXCAVATING

**David Stevens**, Belgrade, 465-3815, cell 314-0314

### EYE CARE

**Eye Care of Maine**, 325A Kennedy Memorial Drive, Waterville, 873-2731, 1-800-660-3403, [www.Maine2020.com](http://www.Maine2020.com)

### FINANCIAL PLANNING

**Golden Pond Wealth Management**, 129 Silver Street, Waterville, 873-2200, [www.goldenpondwealth.com](http://www.goldenpondwealth.com)

### FILMS

**Maine Film Center, Maine International Film Festival**, 861-8138, [miff.org](http://miff.org), [miff@mainefilmcenter.org](mailto:miff@mainefilmcenter.org)

### FIREWOOD

**J & M Logging, Inc.**, 853 Civic Center Drive, (Rte. 27), Augusta, 622-6353, [www.jmlogginginc.com](http://www.jmlogginginc.com)

### FLOORING

**Hammond Lumber Company**, at 21 locations: Auburn, Bangor, Bar Harbor, Belfast, Belgrade, Blue Hill, Boothbay Harbor, Brunswick, Bucksport, Calais, Camden, Cherryfield, Damariscotta, Ellsworth, Fairfield, Farmington, Greenville, Machias, Portland, Rockland, Skowhegan, 866-HAMMOND, [www.hammondlumber.com](http://www.hammondlumber.com)

### GENERATORS

**Generators of Maine**, 262 Augusta Road (Rte. 27), Belgrade, 495-2285, [www.generatorsofmaine.com](http://www.generatorsofmaine.com)

### HISTORICAL SOCIETIES

**Belgrade Historical Society**, history room open by appointment at Belgrade Center for All Seasons, monthly meeting presentations, 548-3569, [info@belgradehistoricalsociety.org](mailto:info@belgradehistoricalsociety.org)

### HOME CARE

**Assistance Plus**, home care services, personal care, homemaking, companionship, 1-800-781-0070, [www.assistanceplus.com](http://www.assistanceplus.com)

**Maine-ly Elder Care**, 28 Center Street, Oakland, 465-3249, 866-430-3249, [www.maine-lyeldercare.com](http://www.maine-lyeldercare.com)

### HOME SECURITY CHECK

**Bob, Check It 4 Me**, Home Check Service. Are you away? Traveling? Storm Concerns? Just contact Bob - a year-round, waterfront Belgrade Lakes resident. Video text provided. 610-585-1996, [bobcheckit4me@gmail.com](mailto:bobcheckit4me@gmail.com)

### INSURANCE

**Allen Insurance and Financial**, 51 Main Street, Waterville, 1-800-244-9046, [AllenIF.com/Waterville](http://AllenIF.com/Waterville)

### KITCHENS

**Hammond Lumber Company**, at 21 locations: Auburn, Bangor, Bar Harbor, Belfast, Belgrade, Blue Hill, Boothbay Harbor, Brunswick, Bucksport, Calais, Camden, Cherryfield, Damariscotta, Ellsworth, Fairfield, Farmington, Greenville, Machias, Portland, Rockland, Skowhegan, 866-HAMMOND, [www.hammondlumber.com](http://www.hammondlumber.com)

### LAKE ASSOCIATIONS

**Belgrade Lakes Association (BLA)**, Long Pond and Great Pond, PO Box 551, 137 Main Street, Belgrade Lakes, 512-5150, [www.belgradelakesassociation.org](http://www.belgradelakesassociation.org)

**McGrath Pond - Salmon Lake Association**, Stewards of Our Belgrade Lakes, <https://www.mcgrathpond-salmonlake.org>



## LAND AND LAKE CONSERVATION

7 Lakes Alliance, PO Box 250, 137 Main Street, Belgrade Lakes, 931-7710, [www.7lakesalliance.org](http://www.7lakesalliance.org)

## LANDSCAPING

**Gagne & Son Concrete Products**, patio setups, stone, masonry products, complimentary outdoor heating, lighting, furniture, 1583 Augusta Road, Belgrade, 495-3313, [gagneandson.com](http://gagneandson.com)

**G&L Contracting**, 116 Lakeshore Drive, Belgrade Lakes, 215-7951, 495-9009, 233-7408, [gandlcontractingmaine.com](http://gandlcontractingmaine.com)

**Lynch Landscaping**, 78 Maple Street, Norridgewock, 474-2420, 405-0880, [www.lynychlandscaping.com](http://www.lynychlandscaping.com)

## LODGING

**Alden Camps**, American Plan cottages, boat rentals, 3 Alden Camps Cove, Oakland, 465-7703, [www.aldencamps.com](http://www.aldencamps.com)

## MAILBOAT RIDES

**Great Pond Mailboat Rides**, calm days are the best, maximum number of riders is 4 small adults, \$20 each, 2-hour ride, leave 9:20-9:40 am Belgrade Lakes Post Office, Main Street, Belgrade Lakes, to reserve text 592-1537

## PATIO SETUPS

**Gagne & Son Concrete Products**, stone, masonry, outdoor lighting, furniture, 1583 Augusta Road, Belgrade, 495-3313, [gagneandson.com](http://gagneandson.com)

## PHOTOGRAPHY

Kevin Couture Photography, HS Seniors, Weddings, Families, Aerial drone images, 474-0754, 858-5382, [www.kevincouturephotography.com](http://www.kevincouturephotography.com)

## PHYSICAL THERAPY

**Dockside Physical Therapy**, 47 Main Street (Route 27), Belgrade Lakes, 495-3195, 512-2544, Fax 512-2545

## PIANO LESSONS

**Dianne Gorman**, 191B Bartlett Road, Belgrade, 495-3222, [Gorman3366@roadrunner.com](mailto:Gorman3366@roadrunner.com)

## REALTORS

**Coldwell Banker Plourde Real Estate**, 143 Silver Street, Waterville, 660-4001, 872-7650, [www.coldwellbanker.com](http://www.coldwellbanker.com)

**Ellen Wells**, Coldwell Banker Plourde Real Estate, 649-147, [cbplourde.com](http://cbplourde.com)

**Lakepoint Real Estate**, 221 Main Street (Rte. 27), Belgrade Lakes, 495-3700, 888-495-3711, [www.belgradelakepoint.com](http://www.belgradelakepoint.com)

**Amy Bernatchez**, Lakepoint Real Estate, 314-2353, [amy@belgradelakepoint.com](mailto:amy@belgradelakepoint.com)

**Trisha Cheney**, Lakepoint Real Estate, 716-6494, [trisha@belgradelakepoint.com](mailto:trisha@belgradelakepoint.com)

**Stephanie Yeaton**, Lakepoint Real Estate, 495-4046, 592-5577, [stephanie@belgradelakepoint.com](mailto:stephanie@belgradelakepoint.com)

## RECREATIONAL VEHICLE AND TRAILER STORAGE

**Belgrade Lakes Marine & Storage**, 366 Augusta Road (Rte. 27), Belgrade, 495-2378, [www.belgradelakesmarine.com](http://www.belgradelakesmarine.com)

## RETIREMENT COMMUNITIES

**Granite Hill Estates**, 60 Balsam Drive, Hallowell, 626-7786, 1-888-321-1119, [www.granitehillestates.com](http://www.granitehillestates.com)

## SURVEYING

**Acme Land Surveying**, 108 Fairbanks Road, Suite 5, Farmington, 778-4081, 800-778-408, [www.acmelandsurveying.com](http://www.acmelandsurveying.com)

## WINDOWS

**Hammond Lumber Company**, at 21 locations: Auburn, Bangor, Bar Harbor, Belfast, Belgrade, Blue Hill, Boothbay Harbor, Brunswick, Bucksport, Calais, Camden, Cherryfield, Damariscotta, Ellsworth, Fairfield, Farmington, Greenville, Machias, Portland, Rockland, Skowhegan, 1-800-HAMMOND, [www.hammondlumber.com](http://www.hammondlumber.com)



# Call of the Loon



## Our Loons in Winter



Welcome back to another Summertime in the Belgrades and the fourth year of our "Call of the Loon"! Like last year, we will be interspersing this column with weekly photo galleries of our iconic bird in action which we hope you will enjoy as much as we have bringing them to you.

As you may or not know, our local Belgrade Lakes Association is into their sixth year

To our knowledge, this is one of four early 2024 loon nests. This one observed in lower Long Pond's Ingham Stream May 21st.

of their Loon Preservation Project to develop a responsible comprehensive plan in order to support our loon population in the very best sustainable manner.

Although our surveys began in earnest May 20th on Great Pond and the 21st on Long Pond, we did confirm four active nests on May 11th so with an estimated 27-28 day gestation period, we should be looking at our first chicks of the season between June 8-14th. With



Long Pond's Tracy Cove 2023 banded female back this summer!



Barlow Herbst



Jodie Tish

an early ice out (March 22nd), we would expect to have some early nesters and we did. Our loons typically nest around Memorial Day with our first chicks as early as Father's Day on June 16th this year, up until around the 4th of July. But, with any luck, we should have two chicks on Long and Great Ponds the week before! Break out the cigars!

Thanks to our loon consultant and mentor, Lee Attix, and Colby College's Professor of Biology and Program leader, Catherine Bevier, BLA's Loon Project will once again have assistance from two new outstanding Colby College interns this summer. Barlow Herbst and Jodie Tsih will provide some young eyes along with their tremendous cumulative experience! Our valued loon volunteers will continue with their eyes on the lakes but will now be assisted by two very capable and dedi-



Observing a loon in Long Pond's Lost River. Keep an eye out for the surveying team flying their new Loon Banner this Summer!!

cated students to assist all of us with the daily observations. Equally important will be their expertise in the sciences and record keeping those statistics to better assess our efforts and future activities. Barlow will be a sophomore with a focus in Ornithology, Biodiversity and Conservation. Jodie will be a senior in September with a major in Biology with a concentration in Ecology and Evolution, and has most recently just completed a semester at Round River Conservation in Botswana. Both of our new interns come with a great deal of experience; including experience researching animal behavior with a focus on how environment impacts the Red-necked Wallaby's social behavior at the FOTA Wildlife Park, assisting with bird banding during Spring, Summer, and Fall migratory seasons including extracting birds from the mist nets, identifying, and aiding with banding birds at the Willistown Trust Bird Conservation Program, Newtown Square, PA., etc.

Continued on page 2...



## Maine Lakes

by Martha F. Barkley

Photography by Christopher Barnes ; Text by Sarah Stiles Bright

Sarah Stiles Bright soars above several familiar lakes in Maine in a "float plane." Her family memories are distinct and place oriented as she views from above. Sea planes land and take off so often on Great Pond, especially on weekends and good weather days!

Henry David Thoreau once again steals the show in this large photography collection:

"A lake is the landscape's most beautiful and expressive feature. It is earth's eye, looking into which the beholder measures the depth of his own nature. The fluviate trees next the shore are the slender eyelashes which fringe it, and the wooded hills and cliffs around are its overhanging brows."

Now, what can top that on a rainy day in Maine and finding this book at the



Belgrade Library?

Friends stop by and our helpful librarians help with individual needs and requests. Hot tea or coffee to help stretch time of lingering among the enticing tales on shelves.

Thoreau even comments on where to look for change from constant rain, not up to the heavens but look down into a lake's depth...

Also the beauty of the forest and hills can best be seen from the middle of a small lake according to Thoreau's observation again in this collection of precious clean lake scenes.

E. B. White chimes in "this constant and trustworthy body of water...each minnow with its small individual shadow...so clear and sharp in the sunlight."

Rachel Carson has her say several times as well. What could be better than a collection of lush Maine lake photos and words of wisdom from great writers on a rainy day in Belgrade? The library is also air conditioned.

...Continued from page 10

Rd

### Skowhegan

- **Margaret Chase Smith Library**, residence, home, museum exhibits, 474-7133, [www.mcslibrary.org](http://www.mcslibrary.org), free, Monday-Friday, 10 am-4 pm, 54 Norridgewock Ave
- **History House Museum**, 1800s local history and culture, heirloom gardens, free, Tuesday-Saturday, 10 am-4 pm, 474-6632, [www.skowheganhistoryhouse.org](http://www.skowheganhistoryhouse.org), 66 Elm St
- **Skowhegan Fairgrounds**, weekly events, covered arena, 474-3621, Madison Ave

### Smithfield

- **Fairview Grange**, function hall, model of conservation-friendly lakeshore landscaping, 362-2791, Rte 8
- **Sunbeam Roller Rink**, 102 year, Fridays 7-10 pm and Wednesdays in July and August, 362-4951, 830 Village Rd, Rte 8
- **Smithfield Historical Society "The Groves House,"** 634-4392, 21 Lakeview Dr

### Vienna

Vienna Union Hall, Mountain Rd, 293-2674

### Waterville

- **Aqua City Actor's Theatre (ACAT)**, [www.theplayhouse.me](http://www.theplayhouse.me), The Playhouse at Waterville Station, 17 Railroad Square
- **Museum in the Streets**, downtown history / walking tour, [www.themuseuminthestreets.com/waterville.htm](http://www.themuseuminthestreets.com/waterville.htm)
- **Head of Falls Park/Two Cent Bridge**, historic foot bridge over Kennebec River connecting Waterville and Winslow, Front St
- **Ticonic Gallery and Studios, Paul J. Schupf Art Center**, 873-7000, Wed-Mon 11 am-7 pm, Main St
- **Colby College Museum of Art**, 859-5600, [www.colby.edu/museum/](http://www.colby.edu/museum/) Tuesday-Saturday 10 am-5 pm, Sunday 12-5 pm, free admission, Colby College Campus, Mayflower Hill
- **Colby College Special Collections, Miller Library**, Monday-Friday 10 am-12 noon and 1-4 pm, free admission
- **Thomas College Art Gallery**, 180 West River Rd
- **Waterville Historical Society and Redington Museum**, 1814 home and pharmacy, 872-9439, [www.watervillehistoricalsociety.org](http://www.watervillehistoricalsociety.org). Fri tours 2-6 pm, 62 Silver St
- **Waterville Opera House**, 873-7000, [www.operahouse.com](http://www.operahouse.com), 93 Main St

### Wilton

- **Wilton Farm & Home Museum**, 645-2091, 645-4578, [www.thewiltonfarmandhomemuseum.org](http://www.thewiltonfarmandhomemuseum.org), Saturday 1-4 pm or by appointment, 10 Canal Street

### Winslow

- **Fort Halifax on the Kennebec River**, historic fort tower, park, Route 201

### Winthrop

- **Norcross Park**, playground, picnic site, boat launch on Maranacook Lake
- **Farmers' Market**, 446-2899, Tuesday and Saturday 9 am-1 pm, town office parking lot, 17 Highland Avenue

Additions/Updates/Corrections: Please contact Summertime in the Belgrades, 495-3777, with changes to this Directory.

...continued from page 13

Please join us in welcoming Barlow and Jodie! We are very fortunate to have these two individuals on the Team! Their classroom training began on May 28th followed by their field work with our loons on both Great and Long Ponds.

Amongst the many objectives this summer, right up there on top is why our twenty two loon territories on both Great and Long Ponds only produced nine chicks last year and only two made it to the great fly-off in October. We have a more than adequate adult loon population, but we just do not have the necessary chick production and longevity. More on this subject as the summer progresses. Stay Tuned!

If you have a particular questions regarding our Belgrade loon population, please email your inquiry to: [info@blmaine.org](mailto:info@blmaine.org) and we will try to answer your question either in this column or via email. Have a great spring and summer enjoying the "Call of the Loon"!

Dick Greenan, Chairman, BLA Loon Preservation Project

...continued from page 14

importantly, not flood out any of our native hummock style loon nests. But it does provide us a little buffer in the event we do run into another drought.

If you have a particular question regarding our Dams and/or water levels, please email your inquiry to: [dickgreenan@outlook.com](mailto:dickgreenan@outlook.com) and we will try to answer your question either in this column or via email.

Enjoy your Summer and again, Welcome Back!

Dick Greenan

Chairman, Belgrade Lakes Watershed Dams Committee

### HOUSE FOR SALE

**370 Point Road | Belgrade**  
Cozy Log Cabin in the heart of Belgrade with easy access to the village, boat launch and town beach.

**HOUSE FEATURES:**

- 1.26 acres
- 2 Bedrooms + Bonus Room
- Standby Generator
- Local Public Water Access



**\$ 459,000**







Contact Amy Bernatchez  
207-314-2353





## MICHAEL BREAU**L**

Creative solutions for all your Mac needs

### Macintosh and iOS support, based in Western Maine, working onsite throughout Maine

If you have Macs, iOS devices, software or network problems, or any ideas you would like to implement using Macintosh computers, give me a call and we can discuss if I can help...



207-578-0226 • [www.michaelbreault.net](http://www.michaelbreault.net)



## — Real Estate Update —

## Lakes Are The Perfect Backdrop

There are over 6,000 lakes and ponds in the State of Maine, creating a network of waterways that define the region's natural beauty and recreational opportunities. In our backyard of Kennebec County alone, there are 106 lakes and ponds, each contributing to the unique charm and lifestyle of the area.

Living, working, or visiting the Belgrade Lakes Region offers a unique perspective on the value that these bodies of water bring to the community. As real estate professionals in this picturesque region, we have an intimate understanding of the value and lifestyle that our lakes offer. These natural treasures are more than just scenic spots—they are the lifeblood of local tourism, recreation, and real estate.

Our lakes are why people visit and move to the Belgrade Lakes Region. They offer an array of recreational opportunities such as boating, fishing, swimming, and kayaking, which draw visitors and potential homeowners alike. The lakes also serve as the perfect backdrop for community events and family gatherings, enhancing the quality of life for residents.

Recognizing the economic and cultural significance of these lakes, the University of Maine conducted a comprehensive study in 2023 to measure their value to the state economy. The findings were astonishing, revealing that Maine's lakes contribute a staggering \$14.1 billion per year. This impressive figure underscores the importance of maintaining and protecting these natural resources.

The study included an analysis of 150 lakes statewide, focusing on several key aspects: lakefront properties, recreational opportunities, youth camps, the

usage of the lakes, and water quality. Each of these elements plays a critical role in the local economy and community well-being.

Lakefront properties are highly sought after, with their scenic views and direct access to water-based activities significantly boosting their market value. Homebuyers are often drawn to these properties not just for their beauty, but for the lifestyle they promise—one of tranquility, outdoor adventures, and a close-knit community.

Recreational opportunities abound in the Belgrade Lakes Region. The lakes are a hub for activities that cater to all ages and interests, from serene morning paddles to lively afternoons of water sports. These activities not only attract tourists but also foster a strong sense of community among residents.

Water quality is an integral part of the appeal and sustainability of lakefront real estate in Central Maine. High water quality ensures a healthy ecosystem, safe recreational waters, and sustained property values. Efforts to monitor and improve water quality are vital for maintaining the ecological balance and attractiveness of the region. Local real estate companies

The lakes of Maine, especially those in the Belgrade Lakes Region, are invaluable assets. They not only enhance the natural beauty and lifestyle of the area but also drive significant economic benefits. As stewards of this region, it is our responsibility to continue advocating for the protection and sustainable use of our lakes to ensure they remain an asset to our region and value to our properties.



## The Dams Keeper Report

Welcome back to another Summertime in the Belgrades and the ninth year of the Dams Keeper Report. Many of us are still recovering from this past Winter and early Spring deluges. With the exception of Salmon Lake, all of our lakes were a good 12-14" above full pond at ice out on March 22nd when they should have been right at full pond or a few inches below. For those of you "from away", you probably heard about this debacle but were not prepared for the shock when you got back To The Lake! With the high water over the entire winter and the high ice levels as a result, it scoured the shoreline of all of our lakes and anything that got in its way such as your docks, shoreline steps, etc. took the brunt. There were also some pretty impressive Pressure Ridges too as a result.



Going back to this past October 2023, we had far more rain than we could handle. Four inches of rain for October was normal but when we received 8.53" in December and another 7.01" just for the first twenty-four days in March, our dams just could not handle the onslaught. Keep in mind that due to the steep watershed, Long Pond comes up three inches for every inch of rain! So, in December, Long Pond came up 25.59"!!! In this past March, Long Pond came up an additional 21.03"!!! Despite both gates being wide open. That is a lot of water for Long Pond's Wings Mill Dam to process with two relatively meager 6'10" square gates and a 90' spillway. Hence the extremely high-water levels and some of the damage that many are still dealing with.



Well, fast forward to this past Memorial Day weekend, Great Pond's Village dam is back down to a reasonable 3.36" above full pond with gate 1 now opened just 10". Long Pond and its Wings Mill dam is 3.15", also above full pond with Gate 1 opened just 18". Salmon/McGrath is right at 3.6" above full pond with its calibrated valve opened just the mandated 1 cfs. flow. Our

neighbors on Messalonskee are presently down to 2.88" below full which is commendable considering the amount of water the aforementioned ponds have been sending their way!

With 26% less precipitation forecasted through July, we are trying to begin our Summer with all of the ponds at 3" above full pond. If you recall, at 3" above full, the water level shouldn't float off any one's dock (Of course, that is assuming that one has found all of their washed out dock sections!) and more

*Continued on page 14..*

**BEST-IN-STATE  
WEALTH ADVISORS**

**SHOOK® RESEARCH**

© 2024 FORBES LLC - USED WITH PERMISSION

**Forbes**

**2024**

**Founded in Belgrade Lakes Village in 1996**

**GOLDEN POND**  
WEALTH MANAGEMENT  
EST 1996

**Please call or email us to start a conversation**

**207-873-2200 • info@goldenpondwealth.com**

Securities offered through LPL Financial, Member FINRA/SIPC



## YOUR PASSION FUELS OURS

DISCOVER THE SHOREMASTER DIFFERENCE

ShoreMaster Aluminum Docks: Strong, lightweight, and easy to handle. Enjoy the removable decking panels and the added strength of 5-sided easy-adjust legs.

FREE SHORELINE ASSESSMENTS | COMPLETE INSTALLATION SERVICE AVAILABLE

LARGE INVENTORY | 15 YEAR WARRANTY | LIMITLESS CUSTOMIZATION OPTIONS



LARGEST SHOREMASTER

DISTRIBUTOR in the COUNTRY

# Hammond Lumber Company

FREE DELIVERY

WITHIN STOREWIDE DELIVERY AREA

22 LOCATIONS ACROSS MAINE & NEW HAMPSHIRE

AUBURN • BANGOR • BAR HARBOR • BELFAST • BELGRADE • BLUE HILL  
BOOTHBAY HARBOR • BRUNSWICK • BUCKSPORT • CALAIS • CAMDEN • CHERRYFIELD  
DAMARISCOTTA • ELLSWORTH • FAIRFIELD • FARMINGTON • GREENVILLE • MACHIAS  
PORTLAND • ROCHESTER (NH) • ROCKLAND • SKOWHEGAN



View our Online ShoreMaster Catalog at:  
[HAMMONDLUMBER.COM/SHOREMASTER](http://HAMMONDLUMBER.COM/SHOREMASTER)



## A Resident-Centered Lifestyle in a Classic Maine Village

“ I recommend Granite Hill Estates to anyone looking for a *safe, clean & caring* place for their loved one! ”

- Toni, resident daughter

To learn more about Granite Hill Estates  
Call: 207.626.7786



Cottage Homes, Independent Living,  
Assisted Living & Memory Care

60 Balsam Drive | Hallowell, ME | [GraniteHillEstates.com](http://GraniteHillEstates.com)



[www.belgradelakepoint.com](http://www.belgradelakepoint.com) (207) 495-3700

Welcome Back To the Lakes!



**BUKER POND**  
Stunning 5 bed / 3 ba compound with 653' of waterfront on 2.5 acres.

Litchfield

MLS 1589355 \$1,600,000



**LONG POND**  
7 Lakes Inn in Historic Belgrade Village. Enjoy 5 bed / 7 ba with 154' of waterfront.

Belgrade

MLS 1577021 \$1,595,000



**GENTLEMANS FARM**  
5 bedroom Victorian with endless possibilities on 40 acres.

Belgrade

MLS 1575555 \$1,400,000



**MARANACOOK LAKE**  
4 bed/3.5 ba Year round waterfront retreat. Masterfully renovated with efficiency in mind.

Readfield

MLS 1587796 \$1,395,000



**COBBOSSEE LAKE**  
Stunning year round home with bunk house. 4 bed / 2.5ba with 110' of waterfront.

West Gardiner

MLS 1582433 \$1,250,000



**SALMON LAKE**  
Rare opportunity to own 7 Classic Maine Camps with 600' of waterfront all on 5.8 ACS.

Belgrade

MLS 1589168 \$1,200,000



**LONG POND**  
3 bed / 2 ba Year-round home with 2 car garage and shared waterfront in Wildwood Estates

Rome

MLS 1589222 \$699,000



**LONG POND**  
Beautifully maintained 3 bed / 2.5 ba home and shared access to Long Pond

Rome

MLS 1589253 \$649,500



**GREAT POND**  
3 bed / 1 ba home with oversized workshop garage and 1,000 ft waterfront

Belgrade

MLS 1582336 \$549,900



**BELGRADE**  
Beautifully maintained log style ranch on quiet street. 2 bed / 2 bath on 1.26 acres

Belgrade

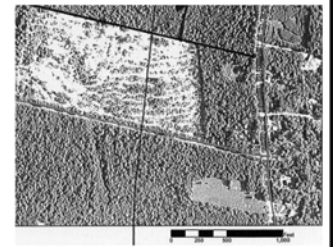
MLS 1589172 \$494,900



**BELGRADE**  
Tastefully renovated 3 bed / 2 bath log home. Private lot and easy commute.

Belgrade

MLS 1581787 \$295,000



**BELGRADE LAND**  
Brand new building lot ready for your new year-round home, camp or retreat. 3.6 acres.

Belgrade

MLS 1583994 \$70,000

