

# Summertime in the Belgrades

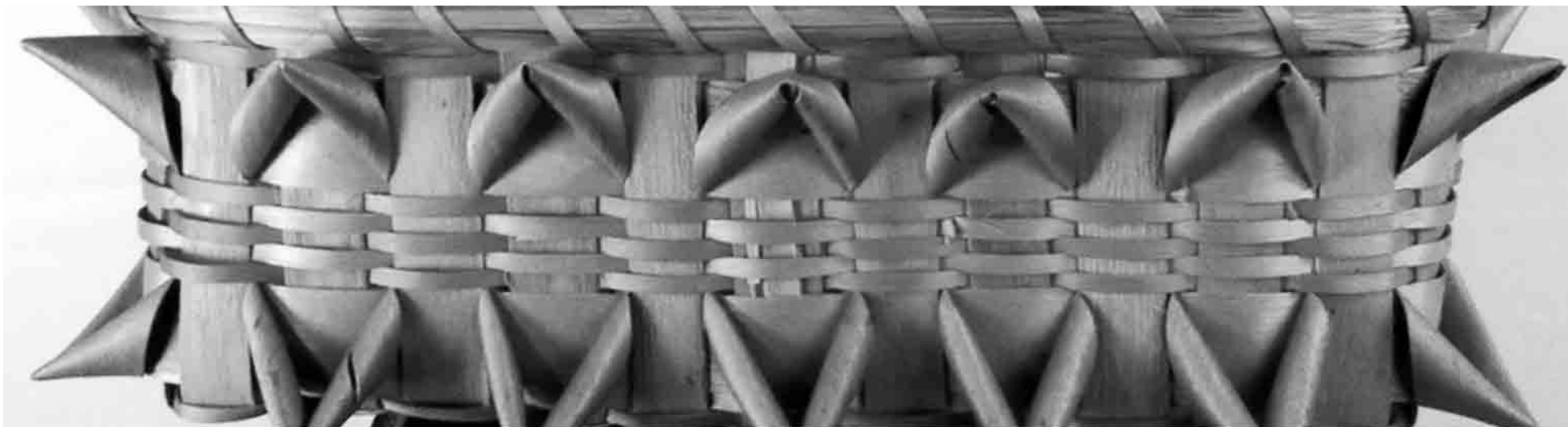
... Serving the Central Maine Lakes & Kennebec River Corridor



VOLUME 25, NUMBER 9

## Maine's Most Amazing Art

by Esther J. Perne



All images in this article courtesy of [www.wabanakifancybaskets.com](http://www.wabanakifancybaskets.com)

It is only natural that the people who first lived in this beautiful state, who left a legacy of respect for the waters and the woods, the lowlands and the heights, the inlands and the coast and who were caring about the bounty of nature would also develop a tradition of artwork that is legendary: basketmaking.

Basketmaking is not only the oldest form of art, it fills purposes both utilitarian and decorative and has a vibrant history in Maine where the Wabanaki Indian tribes - the Penobscot, the Passamaquoddy, the Maliseets and the Micmacs - have perfected the art.

While work baskets, used for gathering, storing and transporting primarily food date back more than 400 years, it is the production of the decorative - the fancy - basket, which began in the late 1880s that has formed the core of a world class collection that will be the feature presentation at the August 15 meeting of the Belgrade



Larry & Debbie Onie

Historical Society by collectors Larry and Debbie

Onie.

The Onie's connection to Maine is a not unusual introduction. They were staying at the Great Pond Campground one very rainy day in 1978 and decided to visit Belgrade Lakes Village to escape the rain, walked into a local real estate office and were shown a camp that they fell in love with. Their story became unique when they decided to decorate with a few traditional Maine Indian baskets and than a few more...The story is now a legend when 45 years later they have a collection of hundreds of Wabanaki fancy baskets.

"We had no intention to become collectors," Larry describes. "Deb always decorated our home in Brookline, Massachusetts with antiques and wanted to do the same for our camp. We got everything one-by-one."

In the collecting, they discovered much of the history of the Wabanaki basketmaking. Most of

*Continued on page 2*

**Mid-Maine Marine Inc.**  
 885 Kennedy Memorial Drive, Oakland, ME 04963  
 1/2 Mile West of Exit 127 off I-95 • 1-800-649-2628  
[www.midmainmarine.com](http://www.midmainmarine.com)

**HARRIS**  
 POWERED BY MERCURY

CATCH YOUR NEXT ADVENTURE

Join us...and help protect our lakes!  
 Please support our Loon Preservation Project.

**Belgrade Lakes Association**  
 137 Main Street, Belgrade Lakes, Maine 04918  
 207-512-5150 • [www.belgradelakesassociation.org](http://www.belgradelakesassociation.org)

**MAINE FILM CENTER**

**INDEPENDENT FILM. THE BEST POPCORN.**

Tickets + Showtimes  
**MAINEFILMCENTER.ORG**





Continued from page 1



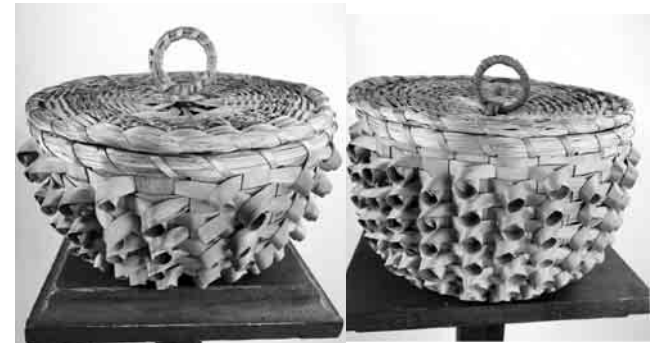
the artists were women. They gathered sweet grass from the coast, a labor intensive and prickly endeavor. They took splints from the black ash trees the men cut down in the swamps. They created all their forms which include at least 50 styles. And, they painstakingly wove, added color and decorative designs, all passed down from women to women.

Although baskets were not signed until the 1980s, the couple extensively researched much of the early fancy baskets. Later they developed a relationship with today's artists. Today, they are considered stewards of the heritage. One of the great things about the journey Deb and he have been on, Larry points out, is the transcultural exchange between Indians and non-Indians.

To date the Onie's collection has been featured in Martha Stewart Living, Native Peoples Magazine and Country Living, was recently part of the Tender Loving Care Exhibit at the Boston Museum of Fine Arts and is currently part of the Wabanaki Exhibit at the Skowhegan History House, 66 Elm Street, which is open 10 am-4 pm Tuesday through Friday.

The collection has also been highly documented by historians and has been highlighted by historical societies, such as the Belgrade Historical Society. Everyone is encouraged to attend the presentation on Tuesday, August 15 at 6:30 pm at the Belgrade Community Center for All Seasons, Route 27, Belgrade Lakes.

Everyone is also invited to view the impressive range and scope of the Wabanaki fancy basket collection at [www.wabanakifancybaskets.com](http://www.wabanakifancybaskets.com).



Locally sourced,  
internationally recognized  
Oakland, Maine

We'd love to show you how good locally sourced and produced wines and spirits can taste. Join us for tastings Fridays and Saturdays from Noon til 5:30 or call 861-2723 to schedule one. Also scheduling private tastings and hosting small events.



## Home insurance, made to measure.

Generations of Belgrade Lakes Region families have looked to GHM Insurance for a personal approach bringing peace of mind. Our experienced professionals create customized insurance plans designed around your needs, not what's worked for someone else.

Call today to find out how we can help you protect your home & auto, boat, RV and more. Insurance for your business, too, as well as health & life insurance, including Medicare.



51 Main Street, Waterville, Maine 04901  
800-244-9046 | [ghmagency.com](http://ghmagency.com)

A DIVISION OF  
ALLEN INSURANCE AND FINANCIAL





## Table of Contents

Maine's Amazing Original Art..... 1-2

Table of Contents: What Makes Summer Special..... 3

Vienna Woods Players Presents Blithe Spirit..... 3

7 Lakes Alliance: Save the Land, Save the Lakes..... 4

The Pine Tree Trail..... 4

Take It Outside with Pete Kallin: Ancient Wisdom ..... 5

Calendar of Events: Awesome August Activities..... 6

Waterville Creates Announces Potluck Exhibition at New Art Center..... 7

Map of the Belgrades: Plan an August Adventure ..... 8-9

Call of the Loon: Loon Volunteers ..... 10

Dining Suggestions: Ah, Go Ahead, Splurge ..... 11

Weekly Farmers' Markets..... 11

Business Directory: Handy Reference Guide ..... 12-13

The Dams Keeper Report: Issues With Great Pond Dam..... 13

Wayne 5K a Family Event..... 13

Barkley on Books: The Book of Maps by Ernest Thompson ..... 14

Real Estate: ..... 15

## Vienna Woods Players Present Noël Coward's, *Blithe Spirit*



Say Carnahan (Ruth, l) and Karen West (Madame Arcati, r) practice on the set of *Blithe Spirit*.  
[vienna.woods.players@gmail.com](mailto:vienna.woods.players@gmail.com).

Vienna - Celebrating 125 years of Noël Coward, the Vienna Woods Players will present, *Blithe Spirit*. Described by the playwright as an "improbable farce in three acts," one of Coward's signature works will be performed at the Vienna Union Hall for 4 shows - Thursday through Saturday, August 10, 11, and 12 at 7 PM and a 2 PM matinee on Saturday the 12th. Tickets are \$15 and available at the door or can be reserved by contacting Tim Davis at

Noël Coward, having been bombed out of his home and office in the London bombing raids of WW II, retired to the English seacoast where he wrote *Blithe Spirit* in 5 days. Writing a play that was "thoroughly heartless," he sought to provide some comic relief from the wartime horrors of the time; "Skeptical novelist Charles Condomine invites self-proclaimed medium Madame Arcati to his home for a séance, hoping to gather material for a new book. When the hapless psychic accidentally summons the spirit of Condomine's late wife, Elvira, his home and life are quickly turned into a shambles as his wife's ghost torments both himself and his new bride, Ruth."



Say Carnahan (l), Don Petersen (c), and Rosemary Baker (r) practice for *Blithe Spirit*

The Players for this performance are (in order of appearance) Rocio Carey (Edith), Sarah Carnahan (Ruth), Tim Davis (Charles), Rosemary Baker (Mrs. Bradman), Don Petersen (Dr. Bradman), Karen West (Madame Arcati), and Allison Kuhns (Elvira). Supporting the actors are Dan Huettner, Chris Crocker, Brian Church and Cheryl Herr-Rains.

The Vienna Union Hall is one of western Maine's hidden gems, located in the heart of Vienna Village at 5 Vienna Mountain Road. Free parking is available and concessions are provided by community members.

**Summertime in the Belgrades**

PO Box 290, Belgrade Lakes, ME 04918

Editor: Esther J. Perne, 207-495-3777 • [sumbelnews@gmail.com](mailto:sumbelnews@gmail.com)

Layout Design: Michael Breault, 207-578-0226 • [mo.breault@gmail.com](mailto:mo.breault@gmail.com)

Webmaster : Gregor Smith • [gregor@roadrunner.com](mailto:gregor@roadrunner.com)

[www.belgradelakesnews.com](http://www.belgradelakesnews.com)

This publication is copyrighted ©MMXXIII, Cider Mill Press Publications, All Rights Reserved.

**Winterberry Farm**  
Farmstore

Belgrade's working family farm

Open 7 days a week, 9am - 6pm

Featuring all-organic products grown and produced here on the farm

Pies, Farm Tours, Farm Store, CSA, Flowers: Bouquets & Pick Your Own Organic, horse and oxen powered vegetable farm

[winterberryfarmstand.com](http://winterberryfarmstand.com)

538 Augusta Road | Route 27, Belgrade | 207-649-3331  
2 miles south of Belgrade Lakes Village on Rt 27

**McGRATH POND - SALMON LAKE ASSOCIATION**

Annual Meeting Aug. 10th @ 6:00 pm - Pleasant Point Park, McGrath Pond. Rain date Aug. 11th @ 6:00 pm

Qualified buyers are looking for homes like yours...

Call today for a free consultation!  
(207) 649-1471

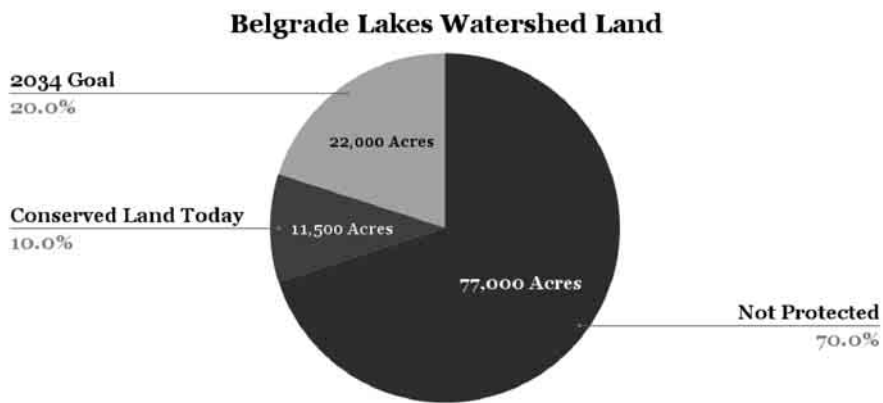
Ellen Wells  
Associate Broker  
Certified Luxury Home Specialist

**COLDWELL BANKER** PLOURDE REAL ESTATE  
143 Silver St Waterville [cbplourde.com](http://cbplourde.com)





## Save The Land to Save the Lakes



Here in the Belgrade Lakes watershed, it's important to remember that the quality of our water depends on the health of our lands. Undeveloped land is the best natural filter for preventing phosphorus from eroding into the lakes and causing algal blooms. Climate change and warming weather patterns are bringing more intense rain events, increasing the amount of run-off that carries phosphorus into our waters.

Individual property owners can have a big impact on water quality by taking steps to be more LakeSmart or lake friendly. On a larger scale, land

conservation provides critical protection of the 7 lakes and their tributaries that define the Belgrade Lakes watershed. Currently, nearly 12,000 acres, or about 10% of the watershed is protected from development. Nationally recognized conservation principles suggest that closer to 30% of land should be conserved to better protect water quality, wildlife, and provide recreational opportunities. Reaching this target over the next decade is an ambitious, yet reachable, goal with the support of everyone who values beauty of our lakes and lands. With finite and diminishing acreage of undeveloped land available for conservation, the time to act is now.

### How You Can Help

- Create a native plant buffer between your lawn and the water. Grass lawns do not prevent run-off due to shallow root systems. Phosphorus is in all soil, even if fertilizer is not used.
- Work toward getting your property LakeSmart certified.
- Donate to 7 Lakes Alliance to help conserve and care for lands and waters. All donations are being matched by a generous donor through September 30, 2023.



## The Pine Tree Trail

by Gene & Sarah Roy

Tourism in Maine has been big business for a long time. Efforts were made early on to entice tourists to come to Maine and spend money in the Pine Tree state. Recently a rusted old sign was discovered which revealed one such effort. Back in 1937 a route through Maine was highlighted that would guide tourists from one end of the state to the other. This was a transect of Maine from south to north (or the reverse). The goal was to highlight the merits of our beautiful state.

Surprisingly, the route spent little time along the Maine coast. Originally,

the trail began in Kittery and led by virtue of signposts, all the way to Fort Kent. Since the trail has been revived (complete with new signs) it now begins in Portland. Mind you that the route precedes the Maine Turnpike and I 95.

The route begins on Forest Ave. Then follows rte 100 through Auburn and Lewiston to Augusta. You go around the rotary there and head north to Belgrade on rte 11. Stay the course on rte 11 through Oakland,

From that point you are directed to Bangor on rte 2.

*Continued on page 7...*

# CROSS FOR LIFEFLIGHT HIKE

Thursday, August 17, 2023

Join us on Thursday, August 17, 2023, for a hike in partnership with 7 Lakes Alliance in Belgrade, beginning at 4:30pm. Show up early for LifeFlight's Ground Safety Course, during which participants will help the helicopter safely land and learn how to transfer a patient to the aircraft.

Every mile you "Cross" counts and helps get us closer to our goal of raising awareness and funds for Maine's only air ambulance service.



Learn more and sign up.

**LIFEFLIGHT OF MAINE**  
Celebrating 25 Years

**REGISTER TODAY!**

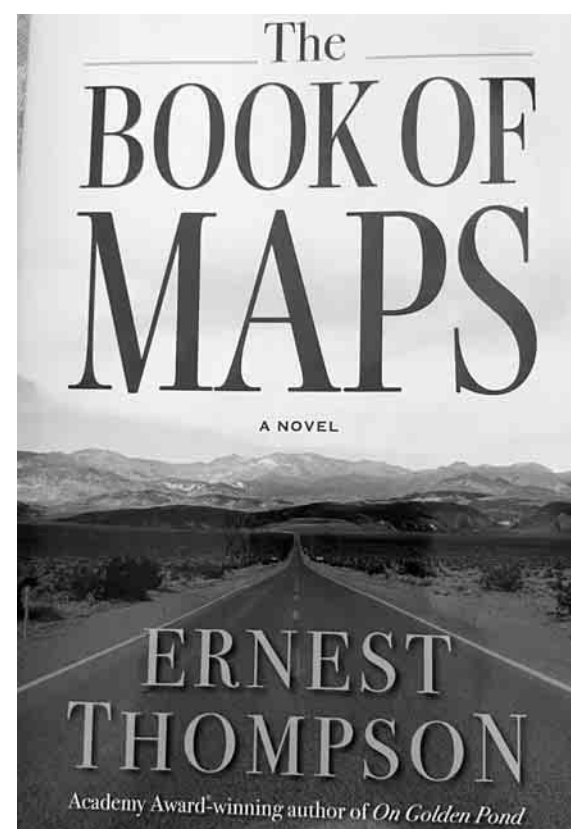
[www.LifeFlight.me/belgrade](http://www.LifeFlight.me/belgrade)

**Join author Ernest Thompson of "On Golden Pond" fame to hear about his new novel "The Book of Maps"**

**Saturday, August 19, 4 pm**

**Belgrade Center for All Seasons**

**Route 27, Belgrade Lakes**



**Free and open to the public,  
the presentation will include:**

- Meet and Greet
- Presentation on "The Book of Maps"
- Auction of "On Golden Pond" memorabilia
- Book sales and signing

**Proceeds will benefit the Belgrade Lakes Association**



## — Take It Outside —

# Ancient Wisdom

by Pete Kallin



I spent most of the past week out in the woods foraging mushrooms, raspberries, blueberries, and blackberries and attended some lake association meetings. I also helped lead a 7-Lakes full moon hike where over 50 participants watched the "Sturgeon Moon" rise from the top of French Mountain. Meanwhile my friend, Jodie Mosher-Towle from North Pond took one of her college buddies, Christine, and her family (plus a boyfriend, Alex) hiking at Mount Phillip. As I was putting my foraged bounty in the freezer, I thought that what I was doing was similar to what others have done around lakes for a long time. It reminded me of a column that I wrote over ten years ago when we were just opening the brand-new Maine Lakes Resource Center (AKA 7-Lakes Alliance Building) in Belgrade Lakes. For over a decade, the nonprofit conservation organizations in the new center have been helping to develop new science and practices for better caring for our

lakes. But like all science, we try to learn from the past. The rest of this column is from one of my favorite "Watershed Wisdom" columns from 2011 that I originally titled, "Ancient Wisdom." The final bit of wisdom from the Lorax is especially important.

Mother Nature's watershed design is based on maintaining upland forests and vegetated wetland buffers to protect water quality. We strive for responsible development to avoid excess stormwater runoff that can cause erosion and deplete groundwater supplies. These are not new ideas.



Consider this observation from over 2000 years ago: **"There are mountains in Attica, which can now keep nothing but bees, but which were clothed, not so very long ago, with fine trees producing timber suitable for roofing the largest buildings....while the country produced boundless pasture for cattle. The annual supply of rainfall was not lost, as it is at present, through being allowed to flow over a denuded surface to the sea, but was received by the earth, in all its abundance, into her bosom where she stored it."** Plato: Dialogue of Critias 360 B.C.E

Plato could just as easily be talking about modern day America. Cutting down forests in the uplands and clearing the native vegetation results in too much impervious surface, which in turn results in excess stormwater runoff. Instead of recharging the groundwater aquifers and filtering slowly into streams and lakes, this runoff flows quickly down the hills, resulting in flooding in the lowlands and excessive erosion and phosphorus-laden sediments flowing into our lakes.

The LakeSmart program emphasizes the importance of maintaining native vegetated buffers along the shorelines of our lakes, rivers, and streams. Over 500 years ago, Leonardo da Vinci gave the same advice: **"The roots of the willows do not suffer the banks of the canals to be destroyed; and the branches of the willows, nourished during their passage through the thickness of the bank and then cut low, thicken every year and make shoots continually, and so you have a bank that has life and is of one substance."**-Leonardo Da Vinci (1452-1519)

A few hundred years later, Henry David Thoreau built his home next to Walden Pond and observed: **"My house was on the side of a hill, immediately on the edge of the larger wood, in the midst of a young forest of pitch pines and hickories, and half a dozen rods from the pond, to which a narrow footpath led down the hill. In my front yard grew the strawberry, blackberry, and life-everlasting, johnswort and goldenrod, shrub oaks and sand cherry, blueberry and groundnut."**-Henry David Thoreau (1817-1862)

Thoreau clearly understood the importance of diverse vegetation and a healthy vegetated buffer. Interestingly, even before the advent of shoreland zoning rules, he built his house a half dozen rods back from the water, almost exactly the 100 ft setback requirement of Maine's current Shoreland Zoning law. With his narrow meandering footpath, I'm sure Thoreau would have qualified for a LakeSmart Award. He certainly understood the beauty of healthy lakes with forested shorefront areas: **"A lake is the landscape's most beautiful and**

*Continued on page 15...*

**MAINE-ly ELDER CARE**  
*"Caring for the ones who cared for us"*

*In - Home Nursing • Personal Care Services • Homemakers  
 • Emergency Response Systems • Transportation Services*

STATE REGISTERED PERSONAL CARE AND HOMEMAKER AGENCY **465-3249** 28 Center St., Oakland, Me 04963

[www.Maine-lyElderCare.com](http://www.Maine-lyElderCare.com) [denise@Maine-lyElderCare.com](mailto:denise@Maine-lyElderCare.com)

**URGENT**

**Inventory is at an all time low!  
 Now is the time to sell your property  
 & get TOP DOLLAR!**

**Call Us TODAY!**

**COLDWELL BANKER** **207-872-7650**

**PLOURDE REAL ESTATE** 143 Silver Street, Waterville ME 04901  
 Each office is independently owned & operated.





## Calendar

Additions and changes to events, activities, outings, visits, etc. are welcome and appreciated. Email, call, or stop us on the street with ideas and information.

**Thursday 8/10 - Saturday 8/19** - Skowhegan State Fair, endless food, fun, exhibitions, livestock events, live bands, daily shows, harness racing, pulls, demolition derbies, 2 dollar days August 11 and 17, Senior Citizen Days August 15 and 18, Military Appreciation Day August 16, parking \$5 per car, per day, kids 10 and under free, Skowhegan Fairgrounds, Route 201, Skowhegan.

**Through 8/12** - Catch Me If You Can, Musical Comedy, 474-7176, Lakewood Theater, Route 201, Skowhegan.

**Through 8/13** - "The Importance of Being Earnest," "An Iliad," "The Story of My Life," "As You Like It," in repertoire, Cumston Hall, The Theater at Monmouth.

**Thursday 8/10 - Saturday 8/12** - Blithe Spirit, Vienna Woods Players, Union Hall, Route 41, Vienna.

**Thursday 8/10** - McGrath Pond-Salmon Lake Association Annual Meeting, guest speaker Stuart Cole, erosion control project coordinator & Lakes Alliance, (rain date August 11), 6 pm, Pleasant Point Park, McGrath Pond Road, Oakland.

**Friday 8/11 and Saturday 8/12** - Readfield Heritage Days, food, fun, history, fireworks, downtown Readfield.

**Friday 8/11 and Saturday 8/12** - Augusta Elks Summer Music Festival, presenting Garrett Holt, Dakota, Working Class, Live Bullet and No Guts, No Glory, Elks Lodge, Civic Center Drive, Augusta.

**Friday 8/11** - Half Moon Jug Band, Johnson Hall Free Waterfront Concert, 6-7:30 pm, Waterfront Park on the Kennebec River, Gardiner.

**Saturday 8/12** - Blue Suede Paws, Lakewood Young Performers Camp, 10 am, 474-7176, Lakewood Theater, Route 201, Madison.

**Saturday 8/12** - Ice Cream Social, free for members, not a member? - sign up, 1-3 pm, Union Meeting House, Readfield.

**Sunday 8/13** - Stan Davis, Concert at Norcross Point, free, 2-4 pm, Winthrop.

**Sunday 8/13** - Borderline Express, Concerts in the Park, 5-6:15 pm, Coburn Park, Skowhegan.

**Monday 8/14** - North Pond Association Annual Meeting, 6:30-7 pm socialize, 7-8:30 pm meeting, via zoom and in person, Pine Tree Camp, North Pond, Rome.

**Monday 8/14** - Western Maine Foothills Band, Concert in the Park, 7-8:30 pm, Meetinghouse Park, downtown Farmington.

**Tuesday 8/15** - Vernal Pools, Chewonki presentation, 3 pm, 7 Lakes Alliance, Main Street, Belgrade Lakes.

**Tuesday 8/15** - The Blenders, Rock on the River series, 7-8:30 pm, Grandstand, Water Street, Hallowell.

**Wednesday 8/16** - Courtesy Boat Inspector Training, learn how to spot invasive plant fragments, Great Pond Boat Launch, 495-6039, 7 Lakes Alliance, Belgrade Lakes.

**Thursday 8/17** - LifeFlight Ground Safety Course, helicopter demonstration and group hike, contact 7 Lakes Alliance for time and location, 495-6039, Belgrade Lakes.

**Thursday 8/17** - Art in the Park, Celebrate Sol Lewitt, free, all ages, 3-5 pm, Castonguay Square, Main Street, Waterville.

**Thursday 8/17** - Cruise In, 5-7 pm, Waterfront Park, Kennebec River, Gardiner.

**Thursday 8/17** - Joan Kennedy, Waterfront Music Series, 6-8 pm, public park, Lake Messalonskee, Oakland.

**Thursday 8/17** - The Maniacs, Village Green Music Series, 6-8 pm, 495-3481, recreation@townofbelgrade.com, Main Street, Belgrade Lakes.

**Thursday 8/17** - Leading Ladies, comedy, 474-7176, Lakewood Theater, Route 201, Madison.



# ARTWALK GARDINER

**Friday  
August 18th  
5:00 - 8:30pm**

### PARTICIPANTS

Karen Adrienne - Alan Claude Inc. - Tiffany Allen - Artdogs  
Claire Aslesen - Bateau Brewery - The Blind Pig - Kate Buehner  
John Carnes - Cattywampus Studio - Circling the Square Fine Art Press  
Megan Daigle - Dandelion Art - Matt Demers - Darcy Duda  
Anne El-Habre - Linda Gallion - Gardiner Public Library - Mike Gent  
Goldfinch Creamery - Duncan Halm - Pam Hetherly - Indie Stage Music  
Scott King - Danae Lagoy - Amy Lewis - Lisa's Legit Burritos  
Jon Luoma - David Malia - Allison McKeen - Margaret Melanson Pottery  
Jessica McKenna - Monhitree - Luke Myers - Taylor Newbeck  
Donald L Patten - Pistil and Page - Ellen Roberts - Robert Saunders  
Selene's Fly Shop - Spindleworks Offsite - Nancy Strout - Jennifer Strode  
Christine Sullivan - Table Bar - Top Side Gaming - Juliette Walker  
Miriam Weber - Terry Wilson - Nicole Wolf

### SPONSORS

1 Brunswick Trading - Costell & Costell Gallery  
The Healing Community MedCo  
Janet Slade State Farm Insurance  
\*Jennifer Strode\*

FEATURING MUSICAL PERFORMANCE BY  
WILL WOODSON & CAITLIN FINLEY

Poster image detail by Ellen Roberts



## ~Blithe Spirit~ Noel Coward



### VIENNA WOODS PLAYERS

August 10, 11, 12 at 7 PM ~ Matinee August 12th at 2 PM  
Vienna Union Hall, 5 Vienna Mountain Road, Vienna, Maine

\$15.00

To reserve tickets and for more information contact Tim Davis at  
vienna.woods.players@gmail.com





## —Along the Kennebec River Corridor—

### Waterville Creates Announces Potluck Exhibition



Waterville Creates is excited to announce Potluck, an exhibition centered on the work of print-maker, ceramicist, storyteller, and restaurant worker Jenny Ibsen. Potluck will be on view to the public in the Ticonic Gallery from August 2–October 2, 2023. In addition to Ibsen’s work, the exhibition features contributions from collaborators Heather Flor, Alana Dao, and Raquel P. Miller.

“I couldn’t think of a better time for this vibrant exhibition. Potluck is a nod to the importance of connection and traditions through shared meals, highlighting the work of four incredible female artists,” said Marie Sugden, exhibitions coordinator at Waterville Creates.

The metaphor of the potluck touches upon issues of care, sustenance, sustainability, and labor. These themes will be explored with shared meals and conversations through related exhibition programming including a still life drawing event on August 16 and September 27 from 6–8pm, and a community potluck to be held in Castonguay Square on Saturday, September 9 from 4–6pm. For more information on these events, please visit [watervillecreates.org](http://watervillecreates.org)

“This show exemplifies the collaboration and generosity of Maine artists,” said Diana Tuite, exhibition curator. “These individuals really view their creative practices as platforms for building community, healing, and assimilating art into daily life.”

The opening reception was held on August 4 from 5–7pm in conjunction with downtown Waterville’s First Friday event. Following opening remarks, a performance by the Elm City Strugglers was held in the HUB lobby space at the Paul J. Schupf Art Center.

The Potluck exhibition is funded in part by a grant from the Maine Arts Commission, an independent state agency supported by the national Endowment for the Arts and our exhibition sponsors: Kennebec Savings Bank, Morning Sentinel + Kennebec Journal, and PRO Moving Services.

Located inside the new Paul J. Schupf Art Center, Ticonic Gallery is open 11am–7pm daily except Tuesdays and federal holidays.

For more information on Potluck, visit [www.watervillecreates.org/shows/potluck/](http://www.watervillecreates.org/shows/potluck/) or contact Marie Sugden at [msugden@watervillecreates.org](mailto:msugden@watervillecreates.org).

....Continued from page 4

The trail continues north to Macwahoc at which point you have a choice, left on rte 2 to Island Falls and thence to Houlton or straight ahead on rte 2a through the famous Haynesville woods to Houlton. From Houlton, drive north on rte 1 until you reach Mars Hill. Then you have another choice, rte 10 1 to Presque Isle and thence to Van Buren or rte 1a to Fort Fairfield and Van Buren.

From then on, it’s rte 1 to Fort Kent!

Trail notes:

Sarah and I drove to Kittery to start, big mistake! The southern parts of coastal rte 1 is a place to avoid. The traffic is very frustrating.

We planned the trip after Googling it. Our plan was to take four days, stop often, take pictures and talk to people. Many knew nothing about the Trail, despite the signs everywhere.

We planned on staying at local hotels or motels and taking our meals at locally owned restaurants. The best restaurant? Al’s Diner in Mars Hill.

The best Inn? The Whitetail Inn in Lincoln.

Continued on page 11.....

**HATHAWAY MILL ANTIQUES**

**10,000 Sq. Ft. Showroom**  
Offering Quality Period Antiques  
to Mid-Century Modern

Open Wed. - Sun. 10am-5pm Closed Mon. & Tues.

[hathawaymillantiques.com](http://hathawaymillantiques.com)  
10 Water Street, Waterville  
207-877-0250

Like & Follow us on Facebook & Instagram!

**LakeHouse™**  
Design Build

Traditional Style Camps,  
Cottages and  
Lakefront Homes

Design • Build • Renovate

[lakehousedesignbuild@gmail.com](mailto:lakehousedesignbuild@gmail.com)  
**207.242.3663**

**FIELDSTONE STORAGE**  
BY APPOINTMENT ONLY  
FIELDSTONESTORAGE.COM 207-314-5523

**Located in the Belgrade Lakes Region!**

Find us at  
**270 Summer Street,**  
**Oakland, Maine.**

**Call us for all your storage needs.**

**NEED A PEDIATRICIAN?**

**Meet Dr. Zainab Alam!**  
Welcoming new pediatric patients today.  
16 Concourse West, Waterville  
207.873.1036

QR code and Northern Light logo.





Design • Install • Maintain

LakeSmart Certified for all your waterfront needs!

- Plant Installations
- Plant Maintenance
- Patios
- Mowing
- Walkways
- Fertilizing
- Permeable Paver Driveways
- Weed and Tick & Mosquito Spray



Serving all of Central Maine!

(207)474-2420  
www.lynchlandscaping.com



**Winter Storage for Summer Vehicles**

**Belgrade Lakes Marine & Storage, Inc.**

207-495-2378 • www.belgradelakesmarine.com  
366 Augusta Road, Route 27, Belgrade, ME



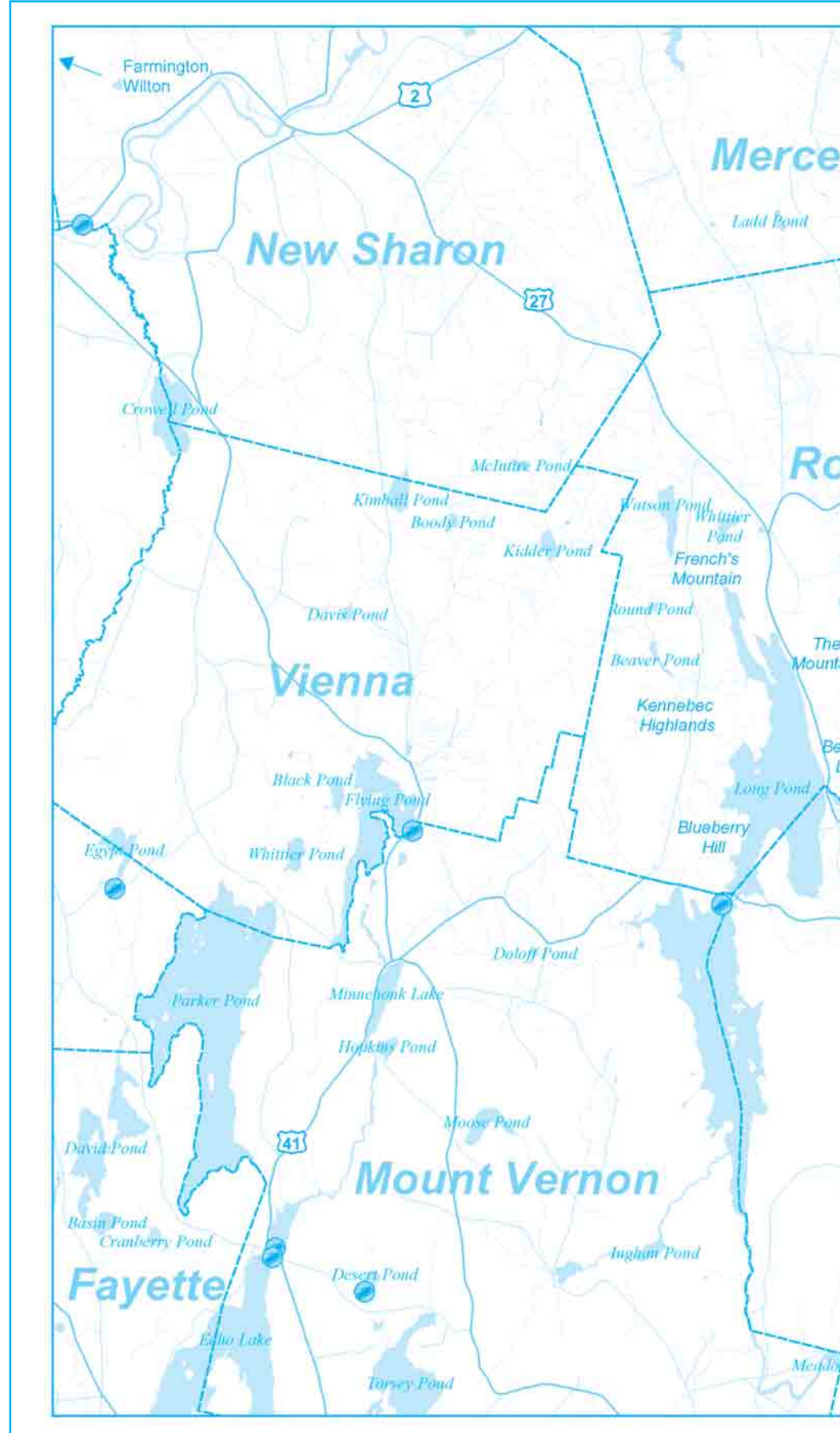
## DOUBLE YOUR DONATION TODAY!

All gifts to 7 Lakes Alliance will be matched, dollar for dollar, up to \$100,000 through September 30th.

Visit [7LakesAlliance.org/donate](http://7LakesAlliance.org/donate) and be part of the solution to save our lakes and lands!



Call 495-3777  
to advertise in  
Summertime in the Belgrades



## Welcome Dr. Zachary Klett

Dr. Klett specializes in all aspects of oculoplastic surgery, including corrective, reconstructive and cosmetic eyelid surgery, lacrimal (tear duct) disorders, and orbital diseases including Thyroid Eye Disease, along with therapeutic and cosmetic Botox injections, fillers and IPL treatments.

Dr. Klett will be doing surgery at Eye Care of Maine in their highly efficient, lower cost Ambulatory Surgery Center.

**EYE CARE**  
  
**OF MAINE**

**873-2731**  
**www.Maine2020.com**  
325A Kennedy Memorial Drive  
Waterville, Maine 04901



  
**Lakepoint**  
REAL ESTATE  
221 MAIN STREET BELGRADE LAKES, MAINE  
(207)495-3700



**MESSALONSKEE LAKE** – Completely remodeled 4-6BR/3BA year-round lakefront retreat has been masterfully renovated to provide you with the ideal spot to entertain and relax at the lake. 100' on Messalonskee, 4,015 sqft, 0.42 ac. Oakland

MLS 1561641

OFFERED AT: \$1,250,000

Trisha Cheney (207) 716-6494  
trisha@belgradelakepoint.com  
Stephanie Gardner  
(207) 592-5577  
stephanie@belgradelakepoint.com





## RIVERFRONT BARBEQUE & GRILLE

### WORLD CLASS BARBEQUE

SEAFOOD, PASTA, & VEGETARIAN ENTREES

207.622.8899

300 WATER STREET, AUGUSTA, MAINE

WWW.RIVERFRONTBBQ.COM

FULL SERVICE DINING \* CATERING \* BULK TAKE OUT

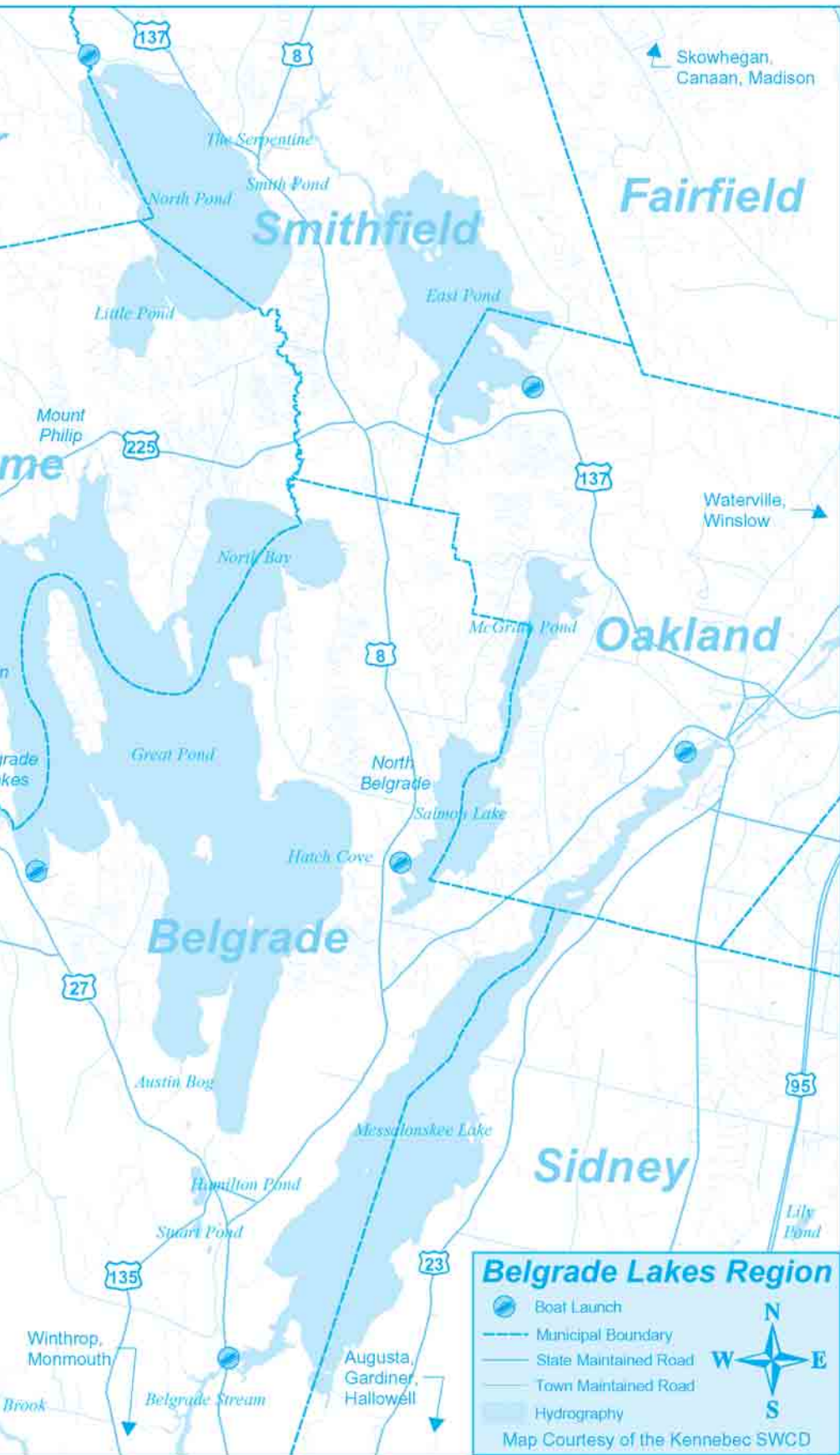


## The Gin Mill

Augusta, Maine

Augusta's finest upscale lounge featuring fine wine, martinis, and over 100 brands of beer from Germany to Japan

Thursday thru Saturday 3:00pm until Midnight,  
Above the Riverfront Barbeque & Grille  
at 300 Water Street  
207.620.9200



# Now Available!

Seaside Casual outdoor furniture is designed to endure the corrosive seaside air, a New England winter, or an Arizona heat wave. Handcrafted furniture that looks great, is easy to maintain, and can be left outdoors from one season to the next.

gagneandson.com / (207) 495-3313  
1583 Augusta Rd Belgrade, ME 04917

## Visit the Businesses on Marina Drive

# Great Pond Marina, Inc.

COME VISIT US TODAY

Fuel Dock: 90 Octane with

VALVECT

- Marine Store: O'Brien Watersports- Tubes, Skis, Wake Boards, ropes, vests, floats.
- Dock & Mooring: Custom Mooring Systems, Dock Lines, Bulk Rope, Boat & Dock Fenders, Mooring Buoys, Chain, Hooks, Shackles

Hours 9-4 Daily

Info@greatpondmarina.com
WWW.GREATPONDMARINA.COM

## An evening in Paris

### Mid-Maine Chamber Super Raffle

Sponsored by Maine State Credit Union

Thursday, September 28, 2023  
5 p.m. Social Hour  
6:30 p.m. Drawings Begin  
Winslow VFW, Post 8835  
175 Veteran Drive, Winslow

For more information visit  
www.midmainechamber.com  
Call 873-3315 to buy tickets

sadiesboathouse@hotmail.com  
• 207-495-4045 •  
Like us on Facebook!  
Friday-Saturday 5-9 PM

## G & L CONTRACTING

Camp Jacking

207-495-9009

www.gandlcontractingmaine.com





**CHILDREN'S BOOK CELLAR**

**BOOKS, PUZZLES, TOYS, GAMES**

A store for children of all ages, the young and the young at heart.

Open Monday 12 to 5 • Tues. - Sat. 9 to 5  
52 Main St. Waterville 872-4543

**CDS CONSTRUCTION**

- Electrical Services
- Heat pump Installs
- Light excavation
- Carpentry Services

Dereck Shaw  
Rome, ME  
207-431-6622  
dereck.shaw207@gmail.com

**ALDEN CAMPS**

- Lakeside Cottages • Boats & Motors
- Full American Plan

3 Alden Camps Cove  
Oakland, Me 04963  
(207-465-7703)

E-mail: info@aldencamps.com • Website: www.aldencamps.com

**THAYER ENGINEERING CO.**

Elliot B. Thayer, PLS, PE  
Andrew Dunbar, PLS, LPF, LSE

**PROFESSIONALS WITH LONGSTANDING TIES TO THE BELGRADE LAKES REGION**

17 Hasson Street  
Farmingdale, ME 04344-1613  
582-7762  
www.thayereng.com

**GENERATORS of MAINE INC.**

SALES • SERVICE • INSTALLATION

www.generatorsofmaine.com 207-495-2285  
dan@generatorsofmaine.com

Professional Service At Fair Prices

**KOHLER**  
IN POWER. SINCE 1920.

**Oliver & Friends BOOKSHOP**

Wednesday - Friday:  
10 am - 6 pm  
Saturday: 10 am - 4 pm  
Sunday: 10 am - 3 pm

207-707-2123  
www.oliverandfriendsbookshop.com  
87 Main Street, Belgrade Lakes Village

**For your jacking and leveling needs, including sill repair, call Eric Lancaster**

"Over 25 years experience."

**207-634-2821**

**Kevin Couture Photography**

HIS Seniors - Weddings - Families  
Aerial images via drone

www.kevincouturephotography.com  
Also find me on Facebook

207-474-0754 207-858-5382  
kevin@kevincouturephotography.com

## Call of the Loon

### What makes a Loon Volunteer?



Capt'n Stevens at the conclusion of a successful Great Pond Loon Survey



2023 Long Pond Banded male defending his territory, wife and chick!

addition:

1. Volunteers will report loons that appear in distress, beached, entangled in fishing line, etc.
2. We also want to extend our thanks and appreciation to those volunteers this year that have kindly shared their kayaks with our two Colby College Loon Project interns so that they may more effectively survey a territory for nests, assess nest integrity, egg abandonment, chick survival in addition to just monitoring their behavior for a better understanding of our loon population.

So you ask, "How can I be a loon volunteer?" "Does it require training in advance?" It's real easy and takes just a phone call (207-512-5150) or email ([info@blomaine.org](mailto:info@blomaine.org)) with your observation at a particular date, time and location. If you would like to assist in weekly surveys of a particular territory then please share your availability whether it be weekly during the summer, for the month of August, etc. For training in the interim, we highly recommend "Loon Lessons", by Jim Paruk, available at our very own Oliver & Friends Bookshop right here in the Belgrade Village.

My better half would not let me forget her contribution to our loon project and when I inquired at what that might be, I was remanded and told in so many words that her cooking for our Expert Loon Consultant, Lee Attix, (who stays with us during his overnights in Belgrade), "providing fresh flowers in his room each night and don't forget the chocolate covered almonds that Lee loves and don't forget all of those meals!" OK! I get it!! Thank you Sue, our #1 Loon Volunteer!!



Another 2023 heart-warming experience!

and assess the health and well-being of our loon population.

If you have a particular question regarding our Belgrade loon population, please email your inquiry to: [info@blomaine.org](mailto:info@blomaine.org) and we will try to answer your question either in this column or via email.

Dick Greenan, Chairman, BLA Loon Preservation Project

Needless to say, our Loon Volunteers are the very heart of the Belgrade Lakes Association's Loon Preservation Project. Five years ago, in our inaugural year of the project, Great Pond resident Dennis Stevens called with a welcomed siting of Great Pond's only surviving chick after we thought we had lost all three to various maladies. And that chick fledged and successfully flew the coop in October. Well, Dennis surfaced again last week by taking our team of Colby interns, faculty member and yours truly out for a loon survey via pontoon boat of Great Pond. What a class act! Thank you once again, Dennis!

Loon volunteers come in all sizes and shapes!! The astute stakeholder/volunteer will email/text a photo of a new chick in a particular territory, or note one of the many fights due to territorial intrusions from another adult in an attempt to steal a territory as well as a new mate. Where's the romance in that?!!!! In



Board member Andy Cook with Family of new Loon Volunteer Recruits

We want to thank all of our Loon Volunteers, without whom, we would not have this all-important project and be able to properly record, document







## Dining

### Augusta

• **Riverfront Barbeque & Grille and Gin Mill Lounge**, world class barbeque, seafood, pasta and vegetarian entrees, full service dining, catering, bulk take out, 300 Water Street, Augusta, [www.riverfrontbbq.com](http://www.riverfrontbbq.com), 622-8899

### Belgrade

• **H.J Blake's for Goodness Sake's**, fresh, homemade, tasty take out, signature lobster rolls, hot dogs, burgers, scenic outdoor seating, 945 West Road, Belgrade, 462-2280

• **Sadie's Boathouse Restaurant** at Great Pond Marine, hearty contemporary American fare, 25 Marina Drive, Belgrade Lakes, 495-4045, 242-1273

• **Winterberry Farm Café**, homemade treats, pie, cookies, granola bars, grilled organic cheese sandwiches, veggies, drinks, 538 Augusta Rd, (Route 27), Belgrade, 649-3331 779-7883

### Oakland - Wines & Spirits

• **Tree Spirits**, tasting room for award winning wines and spirits made from local apples, pears and maple syrup, tours available, 152 Fairfield Street, Oakland, [www.treespiritsofmaine.com](http://www.treespiritsofmaine.com), 861-2723 or 465-3007

## Weekly Farmers' Markets

**Tuesday** - Augusta Farmers' Market, 2-6 pm, Mill Park, Water Street.

**Wednesday** - Fairfield Farmers' Market, 2-6 pm, 81 Main Street, Nazarene Church Parking Lot, 81 Main Street.

**Thursday** - Downtown Waterville Farmers Market, 2-6 pm, Head of Falls and Riverwalk.

**Friday** - Farmington Farmers' Market, 10 am-1 pm, parking lot near Better Living Center, Front Street.

**Saturday** - Farmington Farmers' Market, 9 am-12

noon, in front of Court House, Main Street.

**Saturday** - Hallowell Farmers' Market, 9 am-12 noon, Steven's Commons.

**Saturday** - Skowhegan Farmers' Market, 9 am-1 pm, Somerset Grist Mill.

**Saturday** - Wayne Farmers' Market, 9 am-12 noon, on the Green at Mill Pond.

**Sunday** - Belgrade Lakes Farmers' Market, 8 am-1 pm, 7 Lakes Alliance, Main Street, Belgrade Lakes.

...Continued from page 7



We couldn't pick a town or location that we liked best. There were so many, the whole St. John Valley is beautiful. The forests of southern Aroostook, the view of Katahdin from Golden Ridge, the fields of potatoes and broccoli and finally the blockhouse at Fort Kent.

We posted snapshots each night and posted some on the Pine Tree Trail on the Facebook page. We were told we were the first ones to document to entire trail, which surprised us until we spoke to people who had not idea. The signs are everywhere facing both north and south bound. Get out there and watch for them

**DON'T WAIT UNTIL NEXT SPRING!**  
Schedule boat top, cover and seat repair work for the OFF SEASON. Some items can be left with us all winter for SPRING DELIVERY!  
Call Now for more information Repairs & Alteration Welcome!

**ATTENTION BOAT OWNERS**  
Tops, Covers & Interiors for Boats

**COVERS IT ALL & UPHOLSTERY**  
Central Maine's Largest Upholstery Service

**& CANVAS**

Tops, Covers & Interiors for Cars, Trucks & Boats  
1 1/2 Miles West Exit 127, I-95, KMD, Oakland 465 - 7847

**CENTRAL MAINE SURF COMPANY**

Premier watersports experience on Great Pond in Belgrade

**WAKE SURF & EFOIL LESSONS AND CHARTERS**

(207) 370-2422  
[centralmainesurfcompany.com](http://centralmainesurfcompany.com)

## LakeHouse™ Renovations

Design • Build • Renovate

- General Contractors
- Design Build Contractors

Traditional Style Camps, Cottages and Lakefront Homes

207.242.3663

**ACME LAND SURVEYING, LLC**  
Professional Land Surveyors – Professional Foresters  
Property Surveys, Subdivisions, Topographic Surveys, MLIs, Elevation Certificates/LOMAs, ALTA/ACS Surveys, Deed Research, Wetland Delineation, Forest Management

108 Fairbanks Rd., Suite 5 Farmington, ME 04938  
Tel. (207) 778-4081 Toll Free (800) 778-4081  
Website: [www.acmelandsurveying.com](http://www.acmelandsurveying.com) Email: [info@acmelandsurveying.com](mailto:info@acmelandsurveying.com)

Specializing In

### CAMP JACKING AND LEVELING

John Webster & Son 19 Webster Way Belgrade, ME 04917

Sill Replacement Retaining Walls Barn Repair

(207) 313-8439

35+ Years Experience

## DAVID STEVENS

Excavation & Septic Systems

LOAM GRAVEL SAND

**465-3815**  
Cell: 314-0314

P.O. Box 146 • Belgrade, Maine 04917

## Quality Used Books

THE Peoples BOOK SHOP

8,000 Gently Used, Hand Picked, Eclectic and Popular Books

605 Wings Mill Road Mount Vernon - 620-2392  
[hosehead51@roadrunner.com](mailto:hosehead51@roadrunner.com)

Open by Appointment

**J & M Logging, Inc.**

**622-6353**

Firewood

Cut to order in lengths from 14" to 23"

Green Certified Wood, Seasoned & Ash Cut, Split & Delivered

853 Civic Center Drive, Augusta, ME 04330





## -Business Directory-

### ANTIQUES

**Hathaway Mill Antiques**, Multi-Dealer Emporium,  
10 Water Street, Waterville, 877-0250,  
[www.hathawaymillantiques.com](http://www.hathawaymillantiques.com)

### APPLE ORCHARDS

**The Apple Farm**, 104 Back Road, Fairfield,  
453-7656, [www.applefarm.us](http://www.applefarm.us)

### ARCHITECTURAL DESIGN

**LakeHouse Design, Build, Renovate**, 17 Birchwood Road,  
Augusta, 242-3663.  
<https://www.houzz.com/pro/contact7917/lakehouse-design-build>

### ARTS

**High Peaks Artisan Guild**, art gallery open Friday,  
Saturday, Sunday 11 am-5 pm, other times by chance or  
appointment,  
245 Main Street, Kingfield, 340-1045,  
[highpeaksartisanguild.homestead.com](http://highpeaksartisanguild.homestead.com)  
**Waterville Creates**, 10 Water Street, Suite 106, Waterville,  
616-0292, [www.watervillecreates.org](http://www.watervillecreates.org)

### AUTOMOBILE STORAGE

**Belgrade Lakes Marine and Storage, Inc.**,  
366 Augusta Road, Belgrade, (Rte. 27), 495-2378,  
[www.belgradelakesmarine.com](http://www.belgradelakesmarine.com)

### BANKING

**Maine State Credit Union** 200 Capitol Street, Augusta,  
623-1851, [www.maine-statecu.org](http://www.maine-statecu.org)

### BEVERAGES

**Tree Spirits**, 152 Fairfield Street (Rte. 23), Oakland,  
861-2723 or 465-3007, [www.treespiritsofmaine.com](http://www.treespiritsofmaine.com)

### BOAT COVERS

**Covers It All Upholstery & Canvas**, 1042 Kennedy  
Memorial Dr, Oakland, 465-7847,  
[www.coversitallupholstery.com](http://www.coversitallupholstery.com)

### BOAT LIFTS

**Hammond Lumber Company**, at 22 locations: Auburn,  
Bangor, Bar Harbor, Belfast, Belgrade, Blue Hill, Boothbay  
Harbor, Brunswick, Bucksport, Calais, Camden, Cherryfield,  
Damariscotta, Ellsworth, Fairfield, Farmington, Greenville,  
Machias, Portland, Rochester (NH), Rockland, Skowhegan,  
1-800-HAMMOND, [www.hammondlumber.com](http://www.hammondlumber.com)

### BOAT MOORINGS

**Great Pond Marina**, 25 Marina Drive, (off Rte. 27),  
Belgrade Lakes, 495-2213, [www.greatpondmarina.com](http://www.greatpondmarina.com)

### BOAT RENTALS

**Great Pond Marina**, 25 Marina Drive, (off Rte. 27),  
Belgrade Lakes, 495-2213, [www.greatpondmarina.com](http://www.greatpondmarina.com)

### BOAT SALES AND SERVICES

**Mid-Maine Marine**, 885 Kennedy Memorial Drive,  
Oakland, 465-2146, [www.midmainemarine.com](http://www.midmainemarine.com)

### BOAT STORAGE

**Belgrade Lakes Marine and Storage, Inc.**, 366 Augusta  
Road, Belgrade, 495-2378, [www.belgradelakesmarine.com](http://www.belgradelakesmarine.com)  
**Great Pond Marina**, 25 Marina Drive, (off Rte. 27), Belgrade  
Lakes, 495-2213, [www.greatpondmarina.com](http://www.greatpondmarina.com)  
**Mid-Maine Marine**, 885 Kennedy Memorial Drive,  
Oakland, 465-2146, [www.midmainemarine.com](http://www.midmainemarine.com)

### BOOKS

**Children's Book Cellar**, 52 Main Street, Waterville,  
872-4543, [www.facebook.com/ChildrensBookCellar/](http://www.facebook.com/ChildrensBookCellar/)  
**Oliver and Friends, Bookshop**, 87 Main Street, Belgrade  
Lakes, 707-2123, [oliverandfriendsbookshop.com](http://oliverandfriendsbookshop.com)  
**Peoples Book Shop**, 605 Wings Mill Rd., Mount Vernon,  
620-2392, [hosehead51@roadrunner.com](mailto:hosehead51@roadrunner.com)

### BUILDERS

**G&L Contracting**, Belgrade Lakes, 215-7951, 495-9009,  
233-7408, [gandlcontractingmaine.com](http://gandlcontractingmaine.com)  
**LakeHouse Design, Build, Renovations**, 17 Birchwood  
Road, Augusta, 242-3663. 512-8161  
<https://www.houzz.com/pro/contact7917/lakehouse-design-build>

### BUILDING MATERIALS

**Hammond Lumber Company**, at 22 locations: Auburn,  
Bangor, Bar Harbor, Belfast, Belgrade, Blue Hill, Boothbay  
Harbor, Brunswick, Bucksport, Calais, Camden, Cherryfield,  
Damariscotta, Ellsworth, Fairfield, Farmington, Greenville,  
Machias, Portland, Rochester (NH), Rockland, Skowhegan,  
1-800-HAMMOND, [www.hammondlumber.com](http://www.hammondlumber.com)

### CAMP JACKING AND LEVELING

**Eric Lancaster**, Norridgewock, 634-2821,  
[ejlancaster77@gmail.com](mailto:ejlancaster77@gmail.com)  
**Webster Camp Jacking and Leveling**, 32 Webster Way,  
Belgrade, 313-8439

### CIVIL ENGINEERS

**Thayer Engineering**, septic design, storm water mitigation,  
permitting, 17 Hasson Street, Farmingdale, 582-7762,  
[www.thayereng.com](http://www.thayereng.com)

### COMPUTER CONSULTANTS

Macintosh Solutions Consultant, Michael Breault, 24 Welch  
Road, Wilton, cell 578-0226, [www.michaelbreault.net](http://www.michaelbreault.net)

### CONSTRUCTION

**CDS Construction**, electrical, heat pump, carpentry, Rome,  
431-6622, [dereck.shaw207@gmail.com](mailto:dereck.shaw207@gmail.com)

### DINING

See Directory on page 11

### DOCKS

**Hammond Lumber Company**, at 22 locations: Auburn,  
Bangor, Bar Harbor, Belfast, Belgrade, Blue Hill, Boothbay  
Harbor, Brunswick, Bucksport, Calais, Camden, Cherryfield,  
Damariscotta, Ellsworth, Fairfield, Farmington, Greenville,  
Machias, Portland, Rochester (NH), Rockland, Skowhegan,  
1-800-HAMMOND, [www.hammondlumber.com](http://www.hammondlumber.com)

### ELDER CARE

**Maine-ly Elder Care**, 28 Center Street, Oakland,  
465-3249, [www.maine-lyeldercare.com](http://www.maine-lyeldercare.com)

### EXCAVATING

**David Stevens**, Belgrade, 465-3815, cell 314-0314

### EYE CARE

**Eye Care of Maine**, 325A. Kennedy Memorial Drive,  
Waterville, 873-2731, 1-800-660-3403, [www.Maine2020.com](http://www.Maine2020.com)

### FARM MARKETS

**Winterberry Farm**, 538 Augusta Road, (Rte. 27), Belgrade,  
649-3331, [www.winterberryfarmstand.com](http://www.winterberryfarmstand.com)

### FINANCIAL PLANNING

**Golden Pond Wealth Management**, 129 Silver Street,  
Waterville, 873-2200, [www.goldenpondwealth.com](http://www.goldenpondwealth.com)

### FILMS

**Maine Film Center/Maine International Film Festival**,  
Schupf Art Center, 93 Main Street, Waterville, 873-7000,  
[www.watervillecreates.org/maineilmcenter/](http://www.watervillecreates.org/maineilmcenter/), [www.miff.org](http://www.miff.org).

### FIREWOOD

**J & M Logging, Inc.** 853 Civic Center Drive, (Rte. 27),  
Augusta, 622-6353, [www.jmlogginginc.com](http://www.jmlogginginc.com)

### FLOORING

**Hammond Lumber Company**, at 22 locations: Auburn,  
Bangor, Bar Harbor, Belfast, Belgrade, Blue Hill, Boothbay  
Harbor, Brunswick, Bucksport, Calais, Camden, Cherryfield,  
Damariscotta, Ellsworth, Fairfield, Farmington, Greenville,  
Machias, Portland, Rochester (NH), Rockland, Skowhegan,  
1-800-HAMMOND, [www.hammondlumber.com](http://www.hammondlumber.com)

### GENERATORS

**Generators of Maine**, 262 Augusta Road (Rte. 27), Belgrade,  
495-2285, [www.generatorsofmaine.com](http://www.generatorsofmaine.com)

### HEAT PUMPS

**CDS Heat Pumps**, Derek Shaw, 431-6622,  
[dereck.shaw207@gmail.com](mailto:dereck.shaw207@gmail.com)

### HOME CARE

**Maine-ly Elder Care**, 28 Center Street, Oakland,  
465-3249, [www.maine-lyeldercare.com](http://www.maine-lyeldercare.com)

### INSURANCE

**GHM Insurance**, 51 Main Street, Waterville, 800-244-9046,  
[www.ghmagency.com](http://www.ghmagency.com)

### KITCHENS

**Hammond Lumber Company**, at 22 locations: Auburn,  
Bangor, Bar Harbor, Belfast, Belgrade, Blue Hill, Boothbay  
Harbor, Brunswick, Bucksport, Calais, Camden, Cherryfield,  
Damariscotta, Ellsworth, Fairfield, Farmington, Greenville,  
Machias, Portland, Rochester (NH), Rockland, Skowhegan,  
1-800-HAMMOND, [www.hammondlumber.com](http://www.hammondlumber.com)

### LAKE ASSOCIATIONS

**Belgrade Lakes Association (BLA)**, Long Pond and Great  
Pond, PO Box 551, 137 Main Street, Belgrade Lakes,  
512-5150, [belgradelakesassociation.org](http://belgradelakesassociation.org)  
**McGrath Pond-Salmon Lake Association (MPSLA)**,  
Belgrade and Oakland, PO Box 576, Oakland, ME 04963,  
[www.mcgrathpond-salmonlake.org](http://www.mcgrathpond-salmonlake.org)

### LAND AND LAKE CONSERVATION

**7 Lakes Alliance**, PO Box 250, 137 Main Street, Belgrade  
Lakes, 931-7710, [www.7lakesalliance.org](http://www.7lakesalliance.org)

### LANDSCAPING

**Gagne & Son Concrete Products**, patio setups, stone,  
masonry products, complimentary outdoor heating, lighting,  
furniture, 1583 Augusta Road, Belgrade, 495-3313,  
[gagneandson.com](http://gagneandson.com)  
**Lynch Landscaping**, 78 Maple Street, Norridgewock,  
474-2420, 405-0880, [www.lychlandscaping.com](http://www.lychlandscaping.com)

### LODGING

**Alden Camps**, 3 Alden Camps Cove (off Rte. 137), Oakland,  
465-7703, [www.aldencamps.com](http://www.aldencamps.com)

### MAILBOAT RIDES

**Great Pond Mailboat Rides**, calm days are the best, maxi-  
mum number of riders is 4 small adults, \$20 each, 2-hour  
ride, leave 9:20-9:40 am from Belgrade Lakes Post Office,  
Main Street, Belgrade Lakes, to reserve text 592-1537





## NATURE AND FOREST THERAPY

WorthIt Nature and Forest Therapy Connections, guided forest bathing walks, nature immersion, therapeutic nature experience, 1-3 hours, 399-3103, [constance@worthitnftc.earth](mailto:constance@worthitnftc.earth)

## PATIO SETUPS

Gagne & Son Concrete Products, stone, masonry, outdoor lighting, furniture, 1583 Augusta Road, Belgrade, 495-3313, [gagneandson.com](http://gagneandson.com)

## PHOTOGRAPHY

Kevin Couture Photography, HS Seniors, Weddings, Families, Aerial drone images, 474-0754, 858-5382, [www.kevincouturephotography.com](http://www.kevincouturephotography.com)

## PHYSICAL THERAPY

Dockside Physical Therapy, 47 Main Street, Belgrade Lakes, 495-3195, 512-2544, Fax 512-2545

## PIANO LESSONS

Diane Gorman, 191B Bartlett Road, Belgrade, 495-3222 [Gorman3366@roadrunner.com](mailto:Gorman3366@roadrunner.com)

## REALTORS

Coldwell Banker Plourde Real Estate, 143 Silver Street, Waterville, 660-4001, 872-7650, [www.coldwellbanker.com](http://www.coldwellbanker.com)

Ellen Wells, Coldwell Banker Plourde Real Estate, 649-1471

Lakepoint Real Estate, 221 Main Street, Belgrade Lakes, 495-3700, [www.belgradelakepoint.com](http://www.belgradelakepoint.com)

Amy Bernatchez, Lakepoint Real Estate, 314-2353, [amy@belgradelakepoint.com](mailto:amy@belgradelakepoint.com)

Trisha Cheney, Lakepoint Real Estate, 716-6494, [trisha@belgradelakepoint.com](mailto:trisha@belgradelakepoint.com)

Stephanie Yeaton, Lakepoint Real Estate, 495-4046, 592-5577, [stephanie@belgradelakepoint.com](mailto:stephanie@belgradelakepoint.com)

## RECREATIONAL VEHICLE AND TRAILER STORAGE

Belgrade Lakes Marine and Storage, Inc, 366 Augusta Road (Rte. 27), Belgrade, 495-2378, [www.belgradelakesmarine.com](http://www.belgradelakesmarine.com)

## RESTAURANTS

See Dining Directory on page 11

## RETIREMENT COMMUNITIES

Granite Hill Estates, 60 Balsam Drive, Hallowell, 626-7786, 1-888-321-1119, [www.granitehillestates.com](http://www.granitehillestates.com)

## STORAGE

Fieldstone Storage, by appointment only, 270 Summer Street, Oakland, 314-5523, [FieldStoneStorage.com](http://FieldStoneStorage.com)

## SURVEYING

Acme Land Surveying, 108 Fairbanks Road, Suite 5, Farmington, 778-408, 1800-778-408, [www.acmelandsurveying.com](http://www.acmelandsurveying.com)

## WINDOWS

Hammond Lumber Company, at 22 locations: Auburn, Bangor, Bar Harbor, Belfast, Belgrade, Blue Hill, Boothbay Harbor, Brunswick, Bucksport, Calais, Camden, Cherryfield, Damariscotta, Ellsworth, Fairfield, Farmington, Greenville, Machias, Portland, Rochester (NH), Rockland, Skowhegan, 1-800-HAMMOND, [www.hammondlumber.com](http://www.hammondlumber.com)

## WINE AND SPIRITS

Tree Spirits, 152 Fairfield Street, Route 23, Oakland, 861-2723 or 465-3007, [www.treespiritsofmaine.com](http://www.treespiritsofmaine.com)



## The Dams Keeper Report

Well, for you ardent Dams Keeper Report readers, the following news shouldn't come as much of a surprise. At the request of Kennebec County's Emergency Management Agency's new Director, John Brenenstuhl, acting State Dams Inspector, Tony Fletcher, visited our Village Dam earlier this week and just sent along his findings:

**"The following defects were observed at the Great Pond dam on 7/25/23:**

1. Extensive decay of the concrete in both dams (gates).
2. Settlement & misalignment of the stone spillway weir.
3. Corrosion damage of steel both radial gates.
4. Leaks in the vertical and horizontal gate seals.
5. Concrete decay in the sides of invert of the gate 1 channel.
6. Leaking gate side and bottom seals.
7. Vegetation growing on the gates.
8. Vegetation on the right abutment of the main dam."

Your volunteer Dams Committee is of course well aware of these issues but it's comforting to have our issues acknowledged by the State. That's the good news! The bad news is that our plea for financial assistance is still falling on deaf ears. Thanks to the five subscribing towns of

Belgrade, Oakland, Rome, Sidney and Mt. Vernon in our Inter-local Dams Agreement, and their valued residents who have funded our original quote of \$100,000 from Knowles Industrial Engineering, the dam has deteriorated since that quote and now will require additional funds. So, our calls have gone back out to MEMA, FEMA and Kennebec County Emergency Management for financial support. The aforementioned all acknowledge our predicament but no one has opened their wallets to date but we remain ever vigilant and hopefully some government agency will step up to the plate.

In the meantime, your Dams Committee soldiers on! All water levels in the watershed are in excellent shape. Snow Pond is at 4.44" below full due to their electricity generation. Great Pond is at 1.92" above full with both gates closed to hold the water we have. Long Pond is at 2.76" also above full with both gates also completely closed. Salmon, due to their mandated 1 cfs flow, has now dropped to 1.32" below full pond. A harbinger of things to come? Although we are still having those scattered afternoon showers, they are currently being offset by the warm temperatures and resultant evaporation.

If you have a particular questions regarding our Dams and/or water levels, please email your inquiry to: [dickgreenan@outlook.com](mailto:dickgreenan@outlook.com) and we will try to answer your question either in this column or via email.

Enjoy the family, your vacation and what's left of Summer!

Dick Greenan

Chairman, Belgrade Lakes Watershed Dams Committee

Wayne's Cary Memorial Library' 5K  
Set for Sat. Aug. 12, 2023

Join us for the annual Cary Memorial Library 5K on Sat. August 12, 2023 at 9AM. Runners, walkers, strollers, and leashed pets are all welcome! The gently rolling course starts and ends at the Wayne Elementary School, with familiar landmarks along the way including the Ladd Center, the General Store, Memorial Park, Tubby's, and of course the library. First place male and female finishers will receive a prize, and all children will receive a Tubby's voucher. Registration begins at 8:15 at the Wayne Elementary School, with forms available on the library website - <https://www.cary-memorial.lib.me.us>. You may bring forms that morning or forms and fees (\$15/adults, \$5/kids) can be dropped off at the library or mailed to Cary Memorial Library, PO Box 127, Wayne 04284. FMI: 685-3612 or [jadelbergcml@gmail.com](mailto:jadelbergcml@gmail.com)

...Continued from page 15

management practices into the design of our new center. Come visit and learn how to live lightly on the land for the sake of the lakes. We want our children and grandchildren to have memories like E.B. White: **Letters of E.B. White, Childhood memories, age 5: "For me the golden time of year was summertime, when we all went for one month to a rented camp on the shore of Great Pond, one of the Belgrade Lakes in Maine. This Belgrade era began, I think, in 1904, when I was five years old. It was sheer enchantment. We Whites were city people—everything about Belgrade was a new experience: the big freshwater lake, the pines and spruces and birches, the pasture with its sweetfern and juniper, the farmhouse where we took our meals, the rough camp with its sparsely furnished bedrooms... the boating, the swimming, and the company of other campers along the shore. The month of August was four solid weeks of heaven....**

The delicious smells and sounds of Belgrade are still with me after these many years of separation. I spent much of my time in a canoe, exploring bogs and streams, netting turtles.... At Bean's store [in the Village] Father would treat us to a round of Moxie or birch beer, and we could feed the big bass that hung around the wharf and then head back [in the launch] across the lake... (There was a new drink out called Coca-Cola, but Father assured us it was a cheap imitation of Moxie and without virtue.)"







## Book of Maps by Ernest Thompson

by Martha F. Barkley

Who does not like a writer who thanks his high school teacher in the acknowledgements of his first novel? Westminster, Md. was where the family lived and Thompson's father was an English professor at Westminster College. I visited the campus and considered applying for entrance back in the 1960s, lovely mountain area of Md.

Who does not like a writer who incorporates his own sister as "Essie" in his first novel? Yes, Esther was referred to at least three times that I remember. She was a decent pianist, perhaps some sibling jealousy?

Who does not like a camping trip of a father, 52, and son, ten, across the entire country from California to NH? Only two weeks of fun and frolic and misbehavior, but oh what a time they had. I did happen to skip a lot of the father's introspection and frustrations. The ten-year old son offered to me more complete, careful reading.

"The sight of Yosemite Valley opening its heart to modern-day vagabonds was still as staggering as it must have been to explore in the 1800s...Even a ten year old with an attitude was jolted from his stupor..." I was grabbed by this scene on page 13 and the following travel stops.

Yes, the continuous humor got me, too, like pitching a tent inside the first night motel room to practice, so they would not be embarrassed by other campers watching. The Fritos FUN with bears was hilarious. I am still amused and scared like the father.

Mentioning favorite reads along the journey of this novel intrigued me. From Zen and the Art of Motorcycle Maintenance to the final pages about Rachel Carson's classic Silent Spring. Who can resist perusing this father-son trip of a lifetime?

Skipping the father's constant introspection about becoming a "better father" did not remove me from his son's worthy journey of growing up. The Inset chapters puzzled me a bit, but maybe your reading, dear reader, will be clearer than mine.

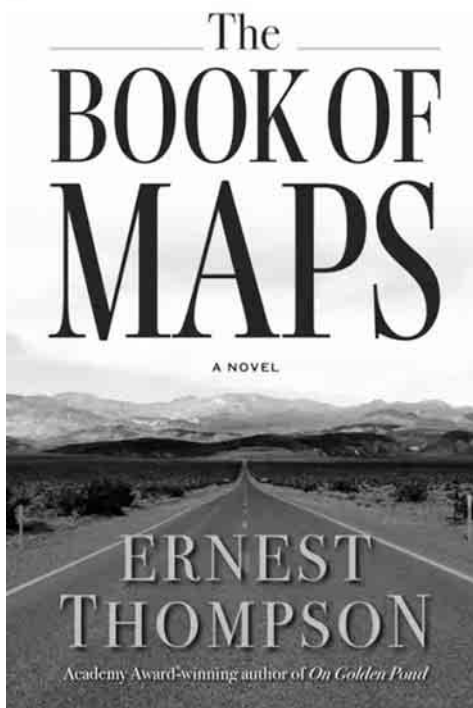
"The Star Valley Branch Library in Afton, Wyoming, was like going home for both Tibbits, a temple of a different order, a place of worship indeed..."

A poster on the library wall: "A picture's worth a thousand words  
Words create a million pictures  
Do the math"

The librarian in her sixties was a good match for both father and son. When a deal was reached to borrow a classic book and mail it back, one wonders at the three creative negotiators. (Spoiler alert) The son was responsible and mailed the book back. Rolex watch for his dad, was it returned in exchange?

"Gibbering loquaciously" is on page 163. By then, our son Matthew and I began to skip reading. That is ok reader, the gist of the story is not missed in this novel. I reread page 172 and did not get it. Help! Also the constant banter of vulgar language and the numerous italicized sentences mystified me. "Huck and Bad Word Jim," made me wonder why the "n" word was implied this way when other common, bad words spewed out voluminously.

The mystery of the missing briefcase is certainly a puzzle until the end. The father is a writer AND is he Ernest Thompson? Camera shots telling only part



of the story certainly rang true with me, smiling not always genuine or sad eyes with grins.

On Valentine's Day, I called Marcia Haigh, our librarian friend from Belgrade Public Library, at her NH home to share our lives and love of books. She recommended Ernest Thompson's first novel to me. I immediately ordered it from Renee Cunningham at Oliver and Friends. Our son in CA actually had his copy from Keplers Bookstore in Menlo Park quicker than my order. (Not Renee's problem, I gave her an incorrect address.)

Fun to read a book with someone else, isn't it? Who can resist our "On Golden Pond" playwright? Ernest Thompson certainly writes his novel like a play, with multiple thoughts of every character, especially the troubled father, and extensive descriptions of every scene. The vocabulary is way beyond my pay grade, but you can google definitions if you so desire.

The Cody, Wyoming rodeo brought back many memories of our family attending a similar event in the 1950s.

"Today Brendan was tuning in Wyatt Earp and Doc Holliday; he could hear Miss Kitty cooing from the swinging doors of the Longbranch and a Wagon Train bowling across the range." This meant a lot to me because during Covid we watched Gunsmoke all day long rather than the news.

Let us get together and discuss this first novel by our very own playwright and director and actor, Ernest Thompson. Maybe his sister Esther would like to join the discussion, too? Hope you read The Book of Maps from our Belgrade Public Library or buy your own copy like I did.



designing women

bridging art and community since 1991

Fine Art and Craft Show

Saturday August 26, 2023

Longfellow's Greenhouse

Manchester, Maine

9:30-4:00

Light Lunch and Mystery Writers

suggested \$2.00 donation at entrance to benefit  
THE SEXUAL ASSAULT CRISIS AND SUPPORT CENTER  
Winthrop, Maine.

"We worked with Amy Bernatchez and she was awesome!! Amy worked really hard for us and went the extra mile to make it all happen in the end. She is not only very personable but extremely knowledgeable! I'd work with her again in a heartbeat!" L.Y.- 7/2023

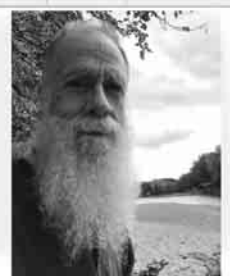


Amy Bernatchez  
(207)314-2353  
amy@belgradelakepoint.com  
221 Main Street, Belgrade Lakes 04918



**MICHAEL BREAU** Creative solutions for all your Mac needs

**Macintosh and iOS support, based in Western Maine, working onsite throughout Maine**



If you have Macs, iOS devices, software or network problems, or any ideas you would like to implement using Macintosh computers, give me a call and we can discuss if I can help...

207-578-0226 • www.michaelbreault.net





## — Real Estate Update —

## The Impact of Landscaping

In many of these articles we discuss the water quality of our lakes, local conservation groups and your role as a lakefront land owner. That's because the value of our local real estate and the vibrance of our community rely on clean water.

Most homeowners take pride in the appearance of their homes and that starts with the landscaping. Waterfront homes and landscaping often include manicured lawns, porches & patios, cleared areas and walkways or paths to the waterfront. These elements of your landscaping can have a significant impact on the amount of rainfall, groundwater and dirt that can end up in

the lake. Dirt and runoff into the lakes are the most significant contributor to a decline in water quality.

Having a beautiful lawn, flower gardens and a smooth walk to your dock do not have to be detrimental to the water quality ... if done right.

Things you can do to avoid erosion and dirt in the lake: Make sure your property has a buffer between the yard and the shoreline, and promote natural vegetation at the shoreline. Avoid using any commercial fertilizers on your lawn or garden, especially ones that contain phosphorus. Make sure your walkway is properly designed to

direct runoff away from the shore. Keep an eye on your dock entrance and shoreline to make sure there is no excessive runoff into the lake.

The best way to start on any landscaping project is to contact those who know – local and state conservation groups including: Maine Lakes, Lakes Environmental Association, The Department of Environmental Protection, 7 Lakes Alliance or your local lake association.

Please help our lakes by doing your part. It is essential to the future of our lakes, and the value of our surrounding real estate.



...continued from page 5



Alex with Miranda, Christine, Kylie, and Michael Polito.

**expressive feature. It is earth's eye; looking into which the beholder measures the depth of his own nature. The fluviatile trees next the shore are the slender eyelashes which fringe it, and the wooded hills and cliffs around are its overhanging brows."**

We have discussed the importance of watersheds and managing our lakes on a watershed basis instead of arbitrary municipal boundaries. There are two places in Maine where this takes place-the Cobbossee Watershed District and the Penobscot Nation in the Penobscot River Watershed. It is no coincidence that Cobbossee Lake is the only major lake that has been taken off of the official DEP list of impaired waterbodies and the Penobscot is Maine's only river with a relatively healthy run of Atlantic Salmon. Native Americans have long recognized the importance of taking care of our lakes and rivers. Chief Seattle (1786-1866) was not a Penobscot but I think they would agree with him: **"The rivers are our brothers. They quench our thirst. The rivers carry our canoes, and feed our children. If we sell you land, you must remember, and teach your children, that the rivers are our brothers and yours, and you must henceforth give the rivers the kindness you would give any brother."**

More recently Luna Leopold (1915-2006), the son of the great 20th Century conservationist Aldo Leopold, who was the Chief Hydrologist of U.S. Geological Services (USGS) and a Professor at the University of California summed it all up

when he said: **"Water is the most critical resource issue of our lifetime and our children's lifetimes. The health of our waters is the principal measure of how we live on the land."**

Our new Maine Lakes Resource Center (MLRC) will shortly be working to make conservation a tradition in our watershed. We plan to implement some of the wisdom of past generations to preserve this special place for future generations. We need to take advantage of Mother Nature's built in systems and figure out ways to modify man-made systems to mimic natural systems. We have implemented many state-of-the-art best

Continued on page 13..

### COFFEEHOUSE ON THE VILLAGE GREEN



**Featuring the sparkling musicianship of  
The Buttermilk Hill Band  
Saturday, August 19- 6:30 PM**

**Belgrade Village Green - Route 27 in Downtown Belgrade Lakes -  
Donations Requested**

**→ Bring your own chairs and refreshments ←**

**→→ In case of rain, Coffeehouse will take place at the Union Church of  
Belgrade Lakes ←←**

Forbes  
**BEST-IN-STATE  
WEALTH ADVISORS 2023**

SHOOK\* RESEARCH



**Founded in Belgrade Lakes Village in 1996**



Please call or email us to start a conversation  
**207-873-2200 • info@goldenpondwealth.com**

Securities offered through LPL Financial, Member FINRA/SIPC





## YOUR PASSION FUELS OURS

DISCOVER THE SHOREMASTER DIFFERENCE

ShoreMaster Aluminum Docks: Strong, lightweight, and easy to handle. Enjoy the removable decking panels and the added strength of 5-sided easy-adjust legs.

FREE SHORELINE ASSESSMENTS | COMPLETE INSTALLATION SERVICE AVAILABLE

LARGE INVENTORY | 15 YEAR WARRANTY | LIMITLESS CUSTOMIZATION OPTIONS



LARGEST  
**SHOREMASTER**

DISTRIBUTOR *in the* COUNTRY

# Hammond Lumber Company

**FREE DELIVERY**

WITHIN STOREWIDE DELIVERY AREA

22 LOCATIONS ACROSS MAINE & NEW HAMPSHIRE

AUBURN · BANGOR · BAR HARBOR · BELFAST · BELGRADE · BLUE HILL  
BOOTHBAY HARBOR · BRUNSWICK · BUCKSPORT · CALAIS · CAMDEN · CHERRYFIELD  
DAMARISCOTTA · ELLSWORTH · FAIRFIELD · FARMINGTON · GREENVILLE · MACHIAS  
PORTLAND · ROCHESTER (NH) · ROCKLAND · SKOWHEGAN



View our Online ShoreMaster Catalog at:  
**HAMMONDLUMBER.COM/SHOREMASTER**



## A Resident-Centered Lifestyle in a Classic Maine Village

**Granite Hill  
ESTATES**  
A NORTHBRIDGE SENIOR LIVING COMMUNITY

*Count on us:*

- Exceptional quality of care
- Fabulous dining options
  - Engaging programs
- Beautiful surroundings

To learn more about  
Granite Hill Estates  
Call Steve: 207.626.7786



Scan Here

Cottage Homes, Independent Living,  
Assisted Living & Memory Care

60 Balsam Drive | Hallowell, ME | [GraniteHillEstates.com](http://GraniteHillEstates.com)

**Lakepoint**  
REAL ESTATE  
(207) 495-3700



**PARKER POND**— Stunning 4BD 2BA compound with 300' of waterfront on Parker Pond with 7.8 acres. Chesterville

MLS 1564301 \$1,900,000



**SEBASTICOOK LAKE**— 5 Bedroom 3 full and 2 half bath exclusive home on its own private peninsula. Newport

MLS 1564201 \$1,800,000



**EAST POND**— Spacious 3BR/2.5BA home on a large 5.63AC lot with 294' of private lake frontage. Smithfield—Price improvement

MLS 1559378 \$1,100,000



**MESSALONSKEE LAKE** - 5BD/3BA Year round waterfront retreat that has been masterfully renovated. Oakland

MLS 1561641 \$1,250,000



**McGRATH POND**— Classic Maine waterfront compound that sits on 2.24 ac. And has 220' on McGrath Pond. Belgrade

MLS 1557401 \$995,000



**GP MILL STREAM** - 3BD/2BA year round home with 120' waterfront and close to the village. Belgrade

MLS 1565295 \$829,900



**PLEASANT POND**— 2BD/2BA seasonal cottage with 100' of waterfront, 1,948sqft, 0.60 ac Gardiner

MLS 1567279 \$409,000



**GREAT POND** - 2BR/1BA cottage just steps to the lake in Cedar Camp Condo Association. 60' private waterfront. Belgrade

MLS 1565287 \$415,000



**WATERVILLE**— 3BD/2.5BA home with 4,136 sq. ft. of living space situated on 1.55 acres of land.

MLS 1561294 \$649,000



**LAND ON HOYT ISLAND**— 7.56 ACS on Hoyt Island with 481' On Great Pond. Belgrade

MLS 1558073 \$235,000



**LONG POND** - 2.42 Acres and 372' of waterfront on beautiful Long Pond. Rome

MLS 1563938 \$559,000



**LONG POND** - 16+ acres of land with 563 feet of waterfrontage on Long Pond. Wonderful sunsets! Belgrade

MLS 1558261 \$799,000

